

Dealing with Domestic Violence in probation & restorative justice practice

Short introduction to domestic violence



Very high
'dark number'



1 / 4

of the population will ever
be affected

35



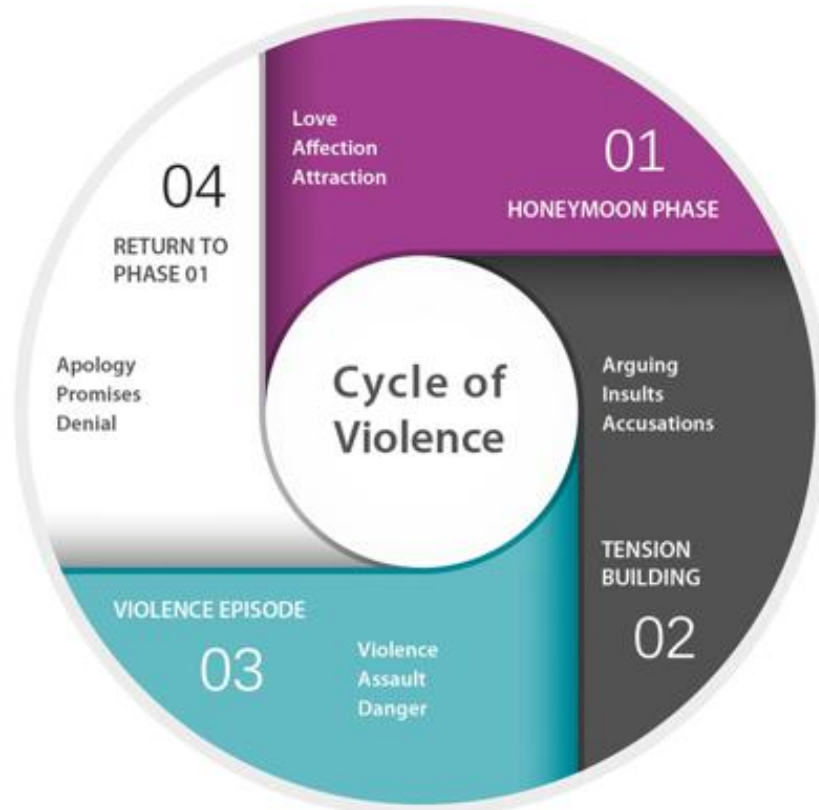
Average number of violent
incidents before someone
seeks out help

7



Average number of
attempts before
someone really leaves

Dangerous vicious circle that is difficult to break

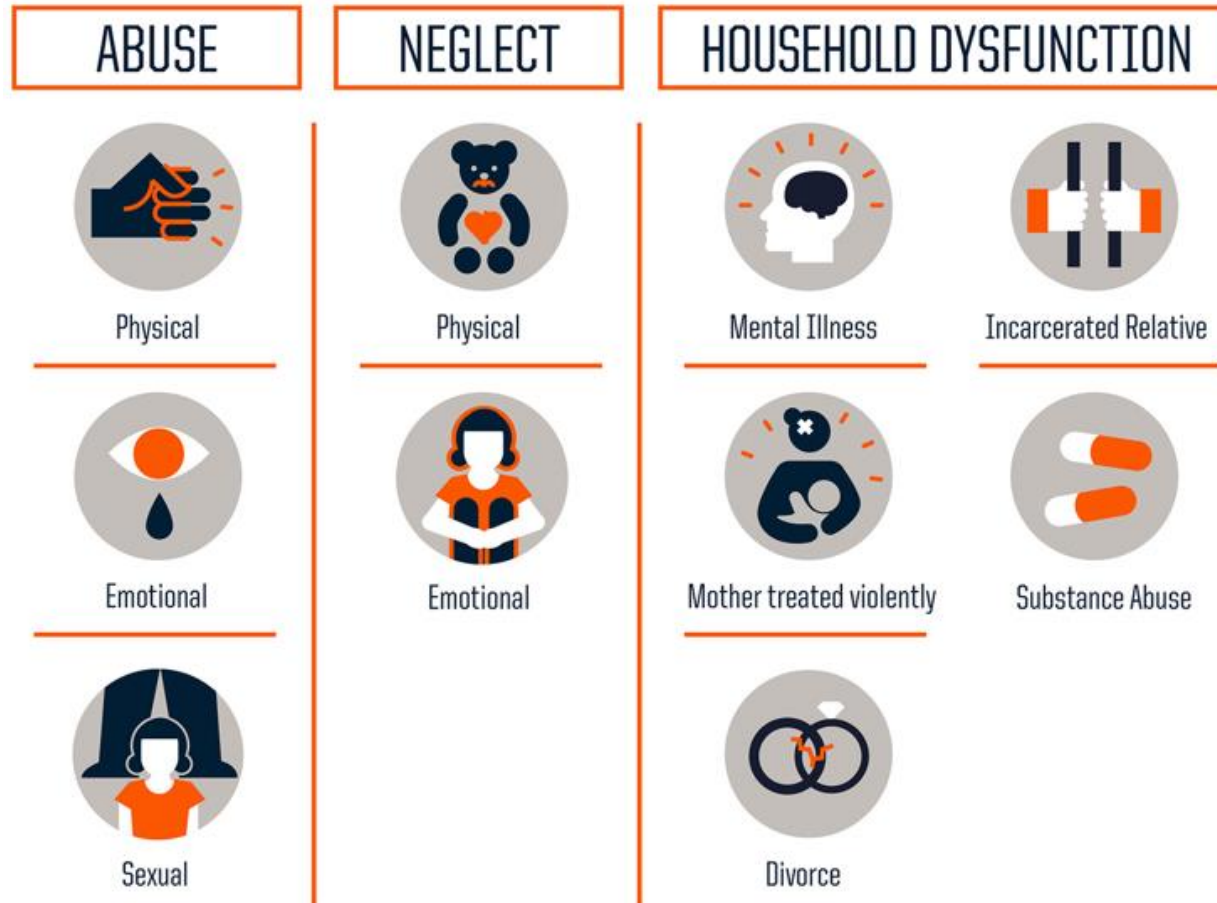


Often in combination with multiple underlying problems (substance abuse, financial problems, personality disorders,...)

And always bear in mind the different dynamics / offender profiles and the consequences for treatment

ACE-study

The impact of adverse childhood experiences - by Dr. Felitti



ACE-study

WHAT IMPACT DO ACEs HAVE?

As the number of ACEs increases, so does the risk for negative health outcomes



Possible Risk Outcomes:

| BEHAVIOR | | | | |
|---------------------------|----------|------------|------------------|--------------|
| | | | | |
| Lack of physical activity | Smoking | Alcoholism | Drug use | Missed work |
| PHYSICAL & MENTAL HEALTH | | | | |
| | | | | |
| Severe obesity | Diabetes | Depression | Suicide attempts | STDs |
| | | | | |
| Heart disease | Cancer | Stroke | COPD | Broken bones |

Probability of Outcomes

Given 100 American Adults

| 33 No ACEs | 51 1-3 ACEs | 16 4-8 ACEs |
|---------------------------|--------------------------|--------------------------|
| WITH 0 ACEs | WITH 3 ACEs | WITH 7+ ACEs |
| 1 in 16 smokes | 1 in 9 smokes | 1 in 6 smokes |
| 1 in 69 are alcoholic | 1 in 9 are alcoholic | 1 in 6 are alcoholic |
| 1 in 480 uses IV drugs | 1 in 43 uses IV drugs | 1 in 30 use IV drugs |
| 1 in 14 has heart disease | 1 in 7 has heart disease | 1 in 6 has heart disease |
| 1 in 96 attempts suicide | 1 in 10 attempts suicide | 1 in 5 attempts suicide |

DV requires a specific approach

- Common and highly under-reported problem
- Complex and dangerous dynamics - Those involved often stay in each other's environment
- Devastating impact on children (including intergenerational transfer)

DV requires a specific approach

- Great social cost (lower quality of life, high governmental costs, higher work absenteeism and lower productivity, ...)
- Many services involved -> transcends policy domains, policy levels and competencies



Example drawing (Simons, 2013)



Family Justice Center Limburg: a multidisciplinary approach to domestic violence

Family Justice Center Limburg

- Multidisciplinary team of professionals - and thus various services - under one roof
- To tackle domestic violence
- Coordinated & systemic (if possible) approach
- Clients can visit (not yet directly accessible)
 - to obtain all the help and the services they need to put an end to the violence
 - to enhance their safety
 - to increase offender accountability

“Take the best of what you already have
and bring it all together”



Step 1: Incident / police report



+



Step 2: Drawing up or adding info to existing "family file"



+



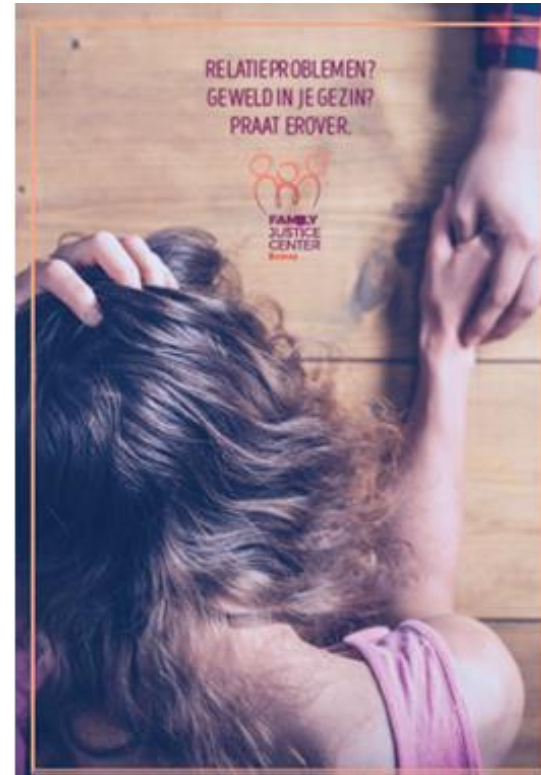
Step 3: Risk assessment & triage





=

letter of public prosecutor
and brochure FJC



=

Informing clients
+ information sharing with FJC partners
+ assessment of 'added value'
+ FJC-offer (active or passive)
→ Specific trajectory for honour related crimes

Added value

Multidisciplinary coordination and information sharing



Structural risk assessment /
Overview because of family file



Swift approach



Team with DV experts



Tailor-made approach



Under one roof



Pro-active approach

