



Accreditation of Behavioural Programmes in Sweden

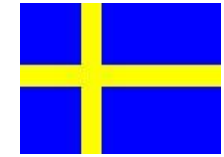
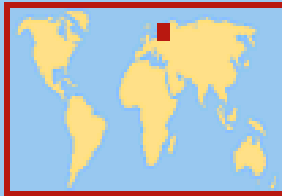
Martin Lardén

Head of Central Coordination in Treatment
Swedish Prison & Probation Service



Kriminalvården

SVERIGE



Population:
9.5 million

Prison:
4667
each day
(2009)

Probation:
14 244
each day
(2009)



Introducing the Accreditation Panel

- **The Swedish prison & probation Service (SPPS)**
- **The Director General of the SPPS**
- **Part of the “What Works” agenda**
- **Inspired by England & Wales**
- **Independent regarding decision**

Purpose of Accreditation

- **To create a basis of programmes for the Swedish Prison & Probation Service, that is directed to a majority of the clients and that is built on the principles of "What Works".**
- **An accredited programme is a programme that is based on research and that is expected to reduce recidivism, if correctly administered.**



Accreditation criteria

1. Research-based Model of Change
2. Target Group & Allocation of Offenders
3. Focus on Dynamic Risk Factors
4. Effective Methods
5. Skill Orientation
6. Engagement & Motivation
7. Intensity & Duration
8. Ecological Validity
9. Programme Integrity
10. On-going Evaluation

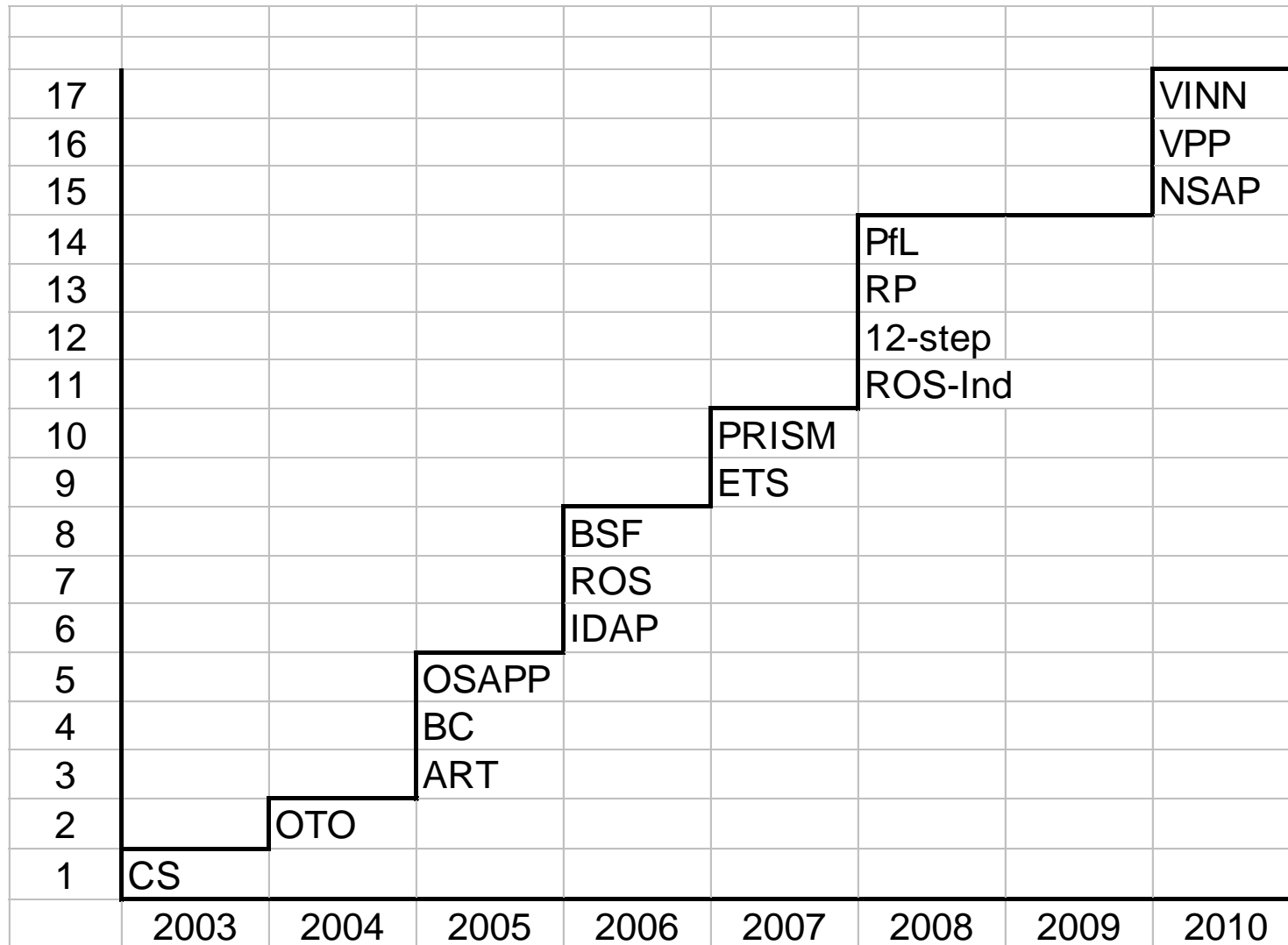


The Panel December 2011

- Prof. Emeritus. Lennart Melin, Uppsala
- Prof. Odd Lindberg, Örebro
- Prof. Mats Fridell, Växjö
- Prof. Emeritus. Bengt-Åke Armelius
- Prof. Britt af Klinteberg
- Ass. Prof. Marianne Kristiansson, KI
- Prof. Jerzy Sarnecki, Stockholm
- Martin Lardén, SPPS, Chair
- Anders Claus, SPPS, Secretary
- Lars Krantz, SPPS

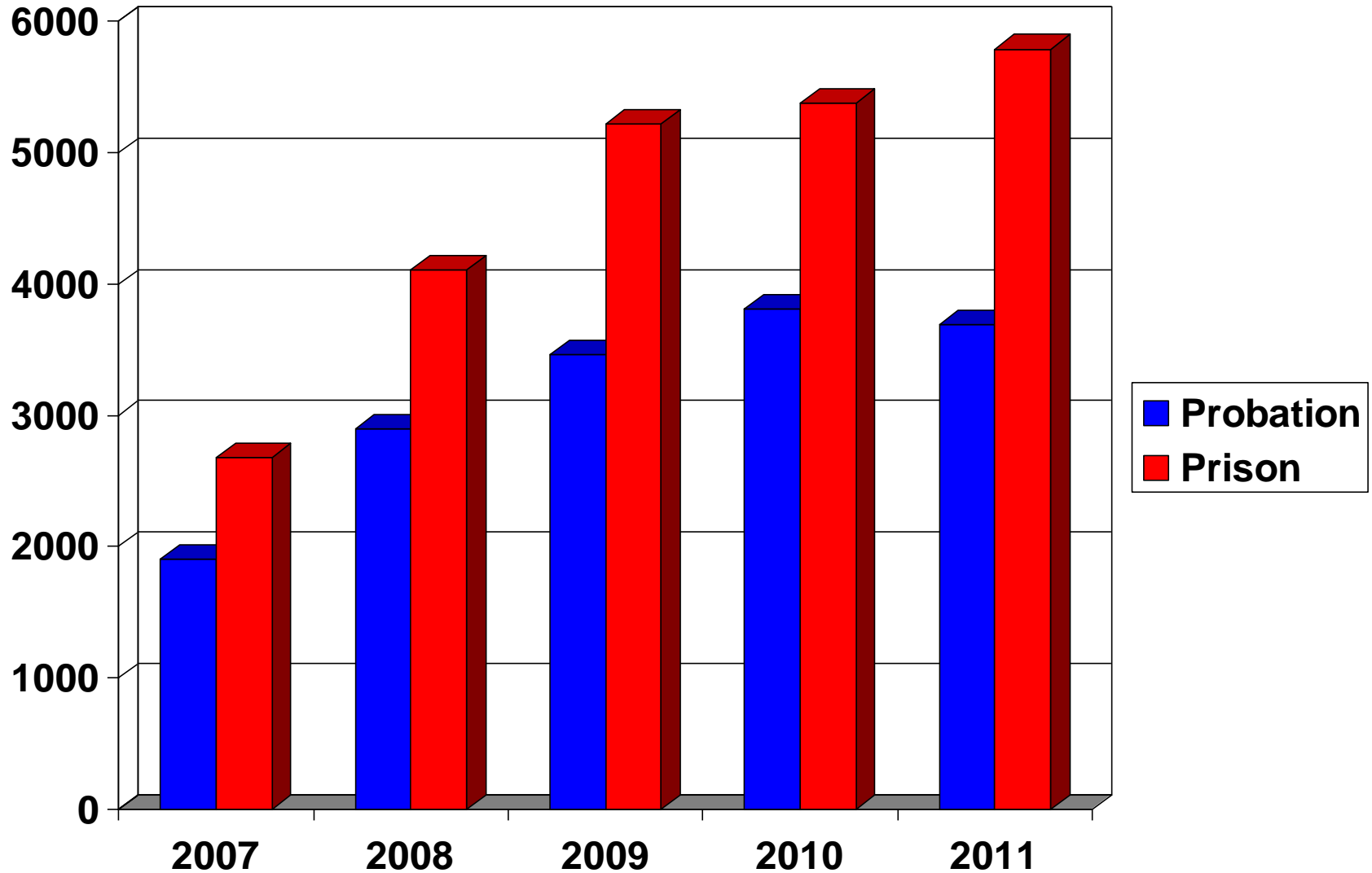


Accreditation of Programmes



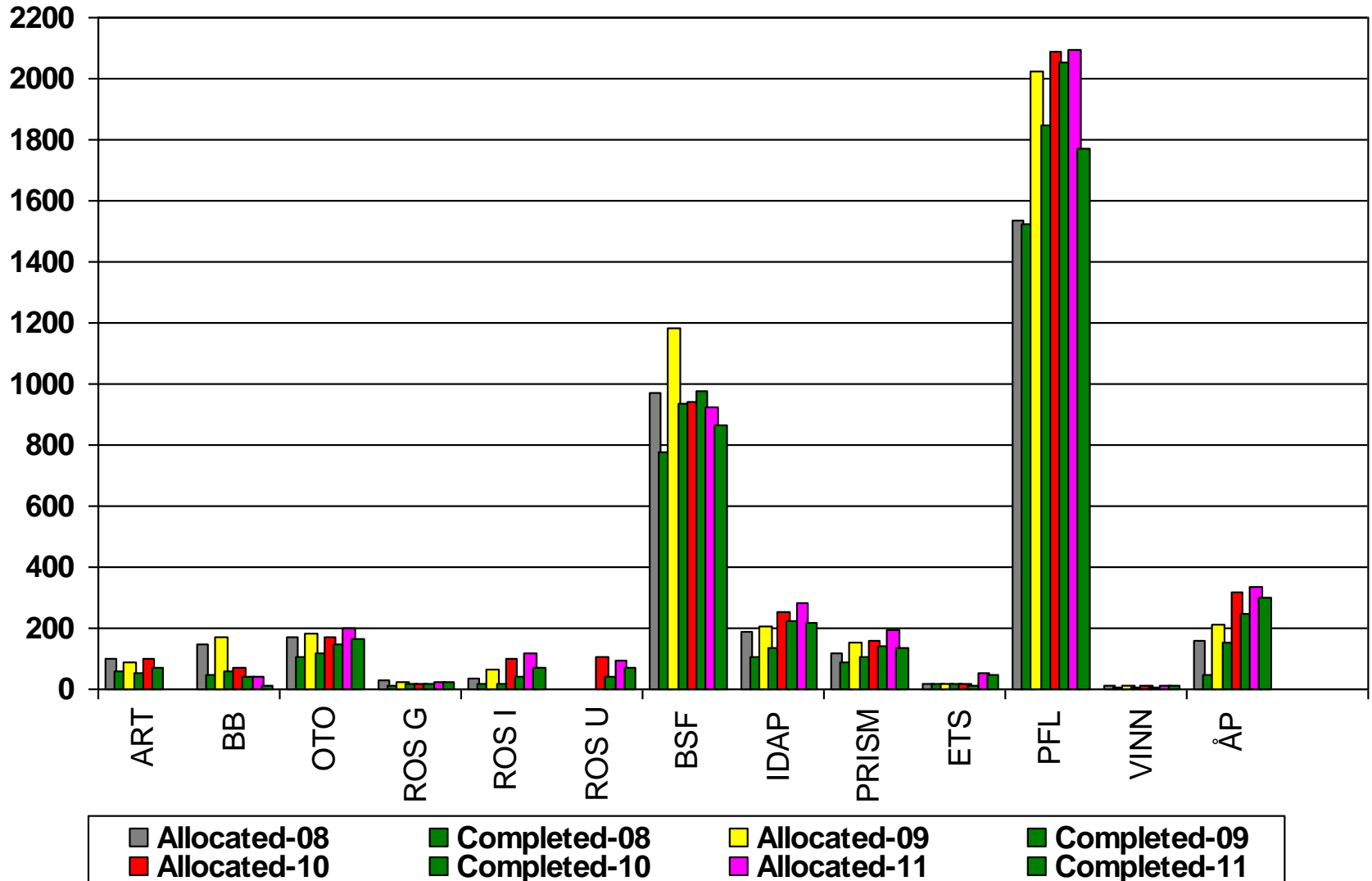


Completed programmes in probation & prisons 2007-2011



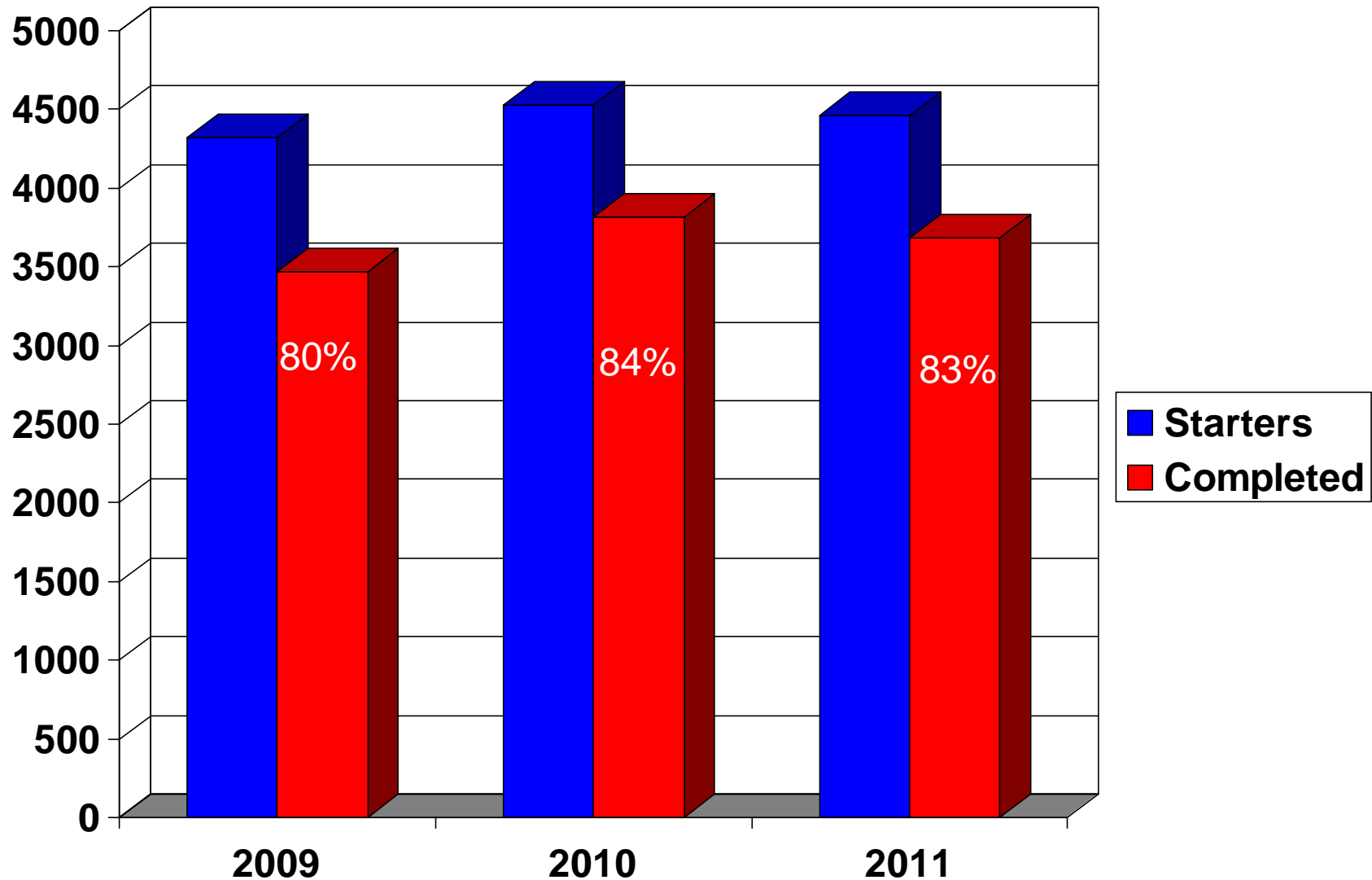


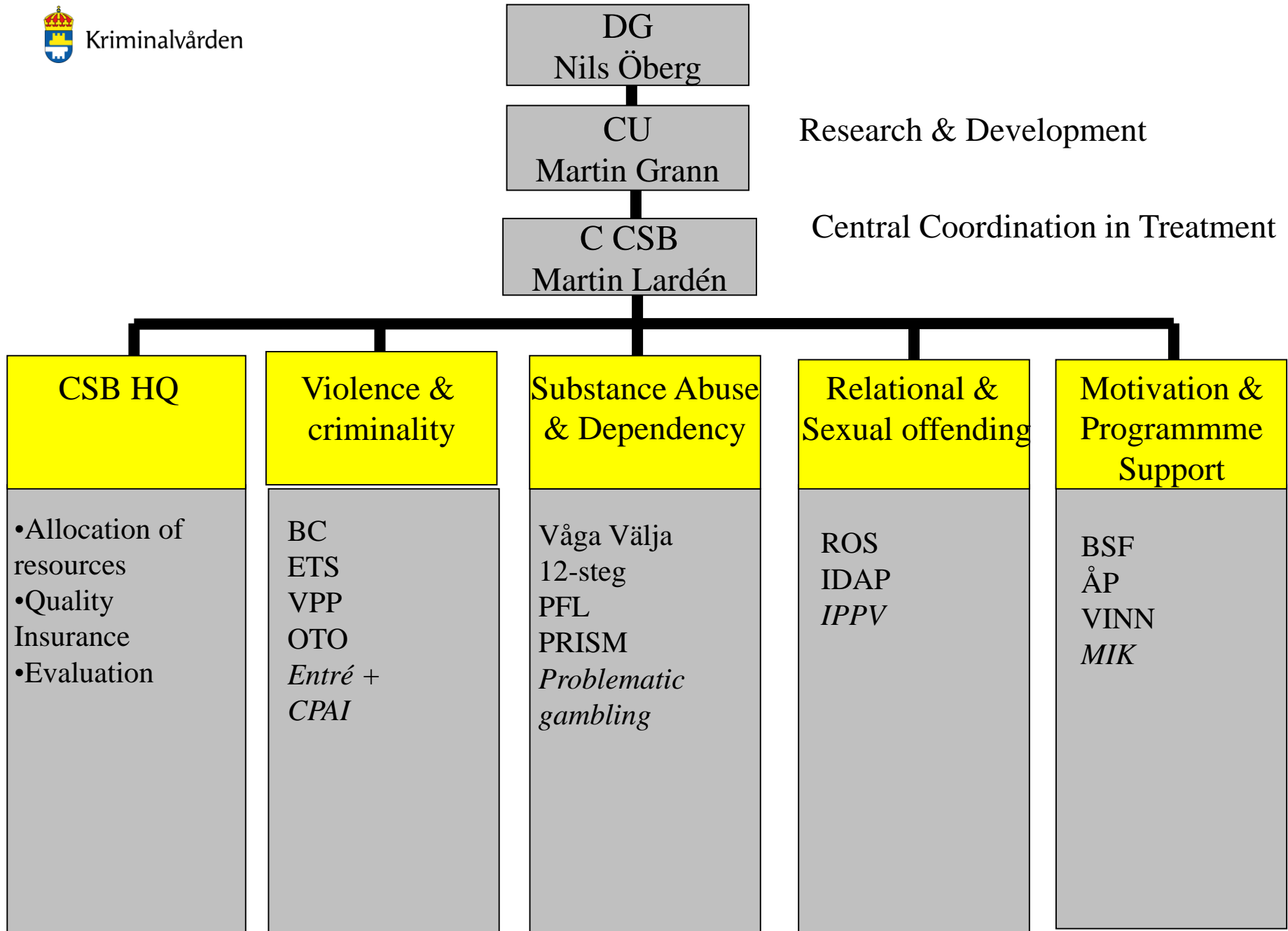
Frivård; Uppdrag och antal fullföljda per program 2008 - 2011





Started & completed programmes in probation 2009-2011

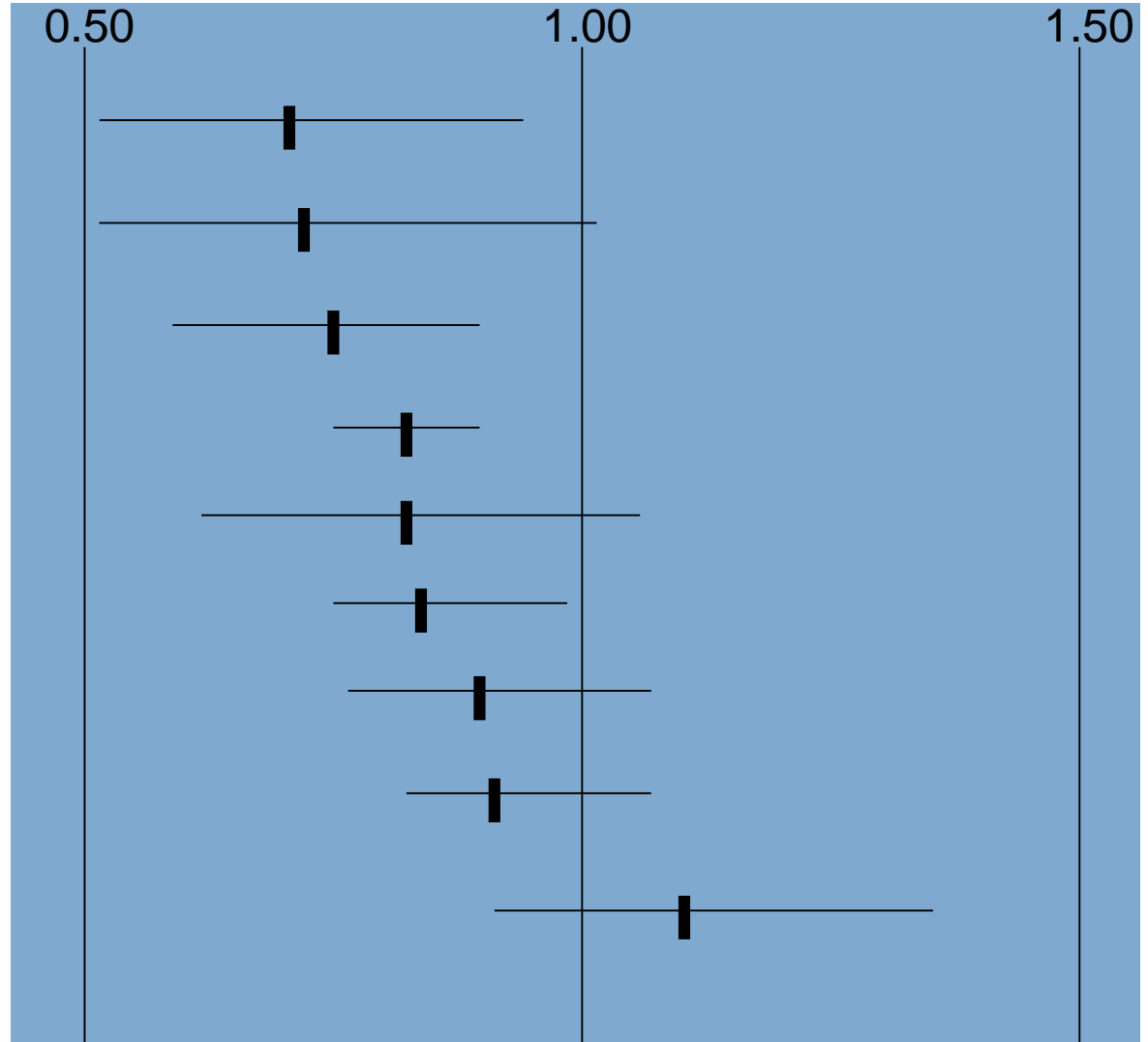






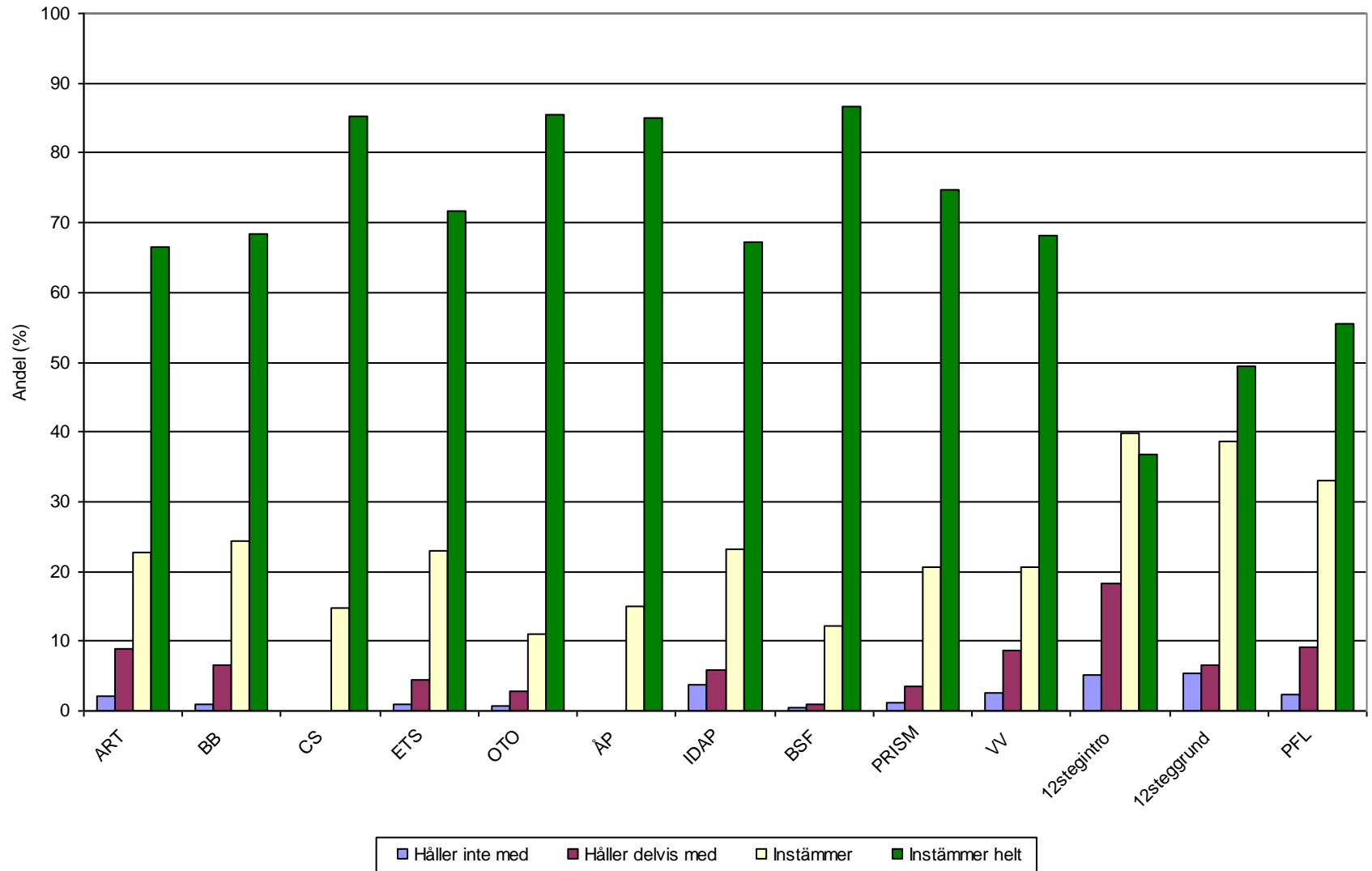
Results completers

- PRISM
- IDAP
- OTO
- 12-STEP
- ROS
- OSAPP
- ETS
- BC
- ART





I think the trainer/s were good

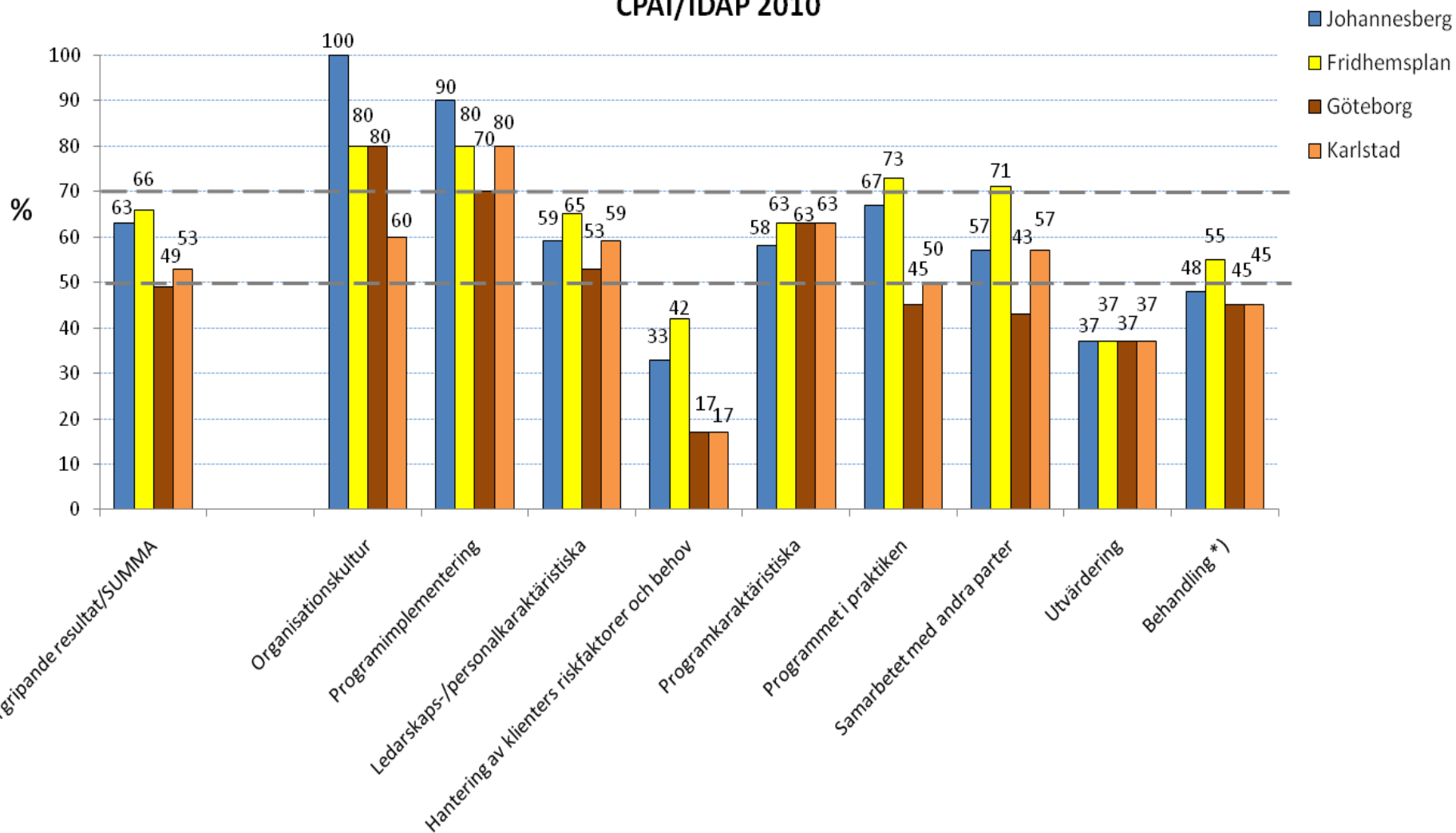




CPAI – 2000 (131)

- Organisational Culture
- Program implementation
- Management/staff
- Risk-Need management
- Program characteristics
- Core Correctional Practice
- External co-operation
- Evaluation

CPAI/IDAP 2010





Kriminalvården

The End

martin.larden@kriminalvarden.se



Positive experiences

- High status of accreditation & the panel
- Focus on integrity & implementation issues
- Improved quantity & quality of programmes