

Welcome to our workshop

“Its a risky business”

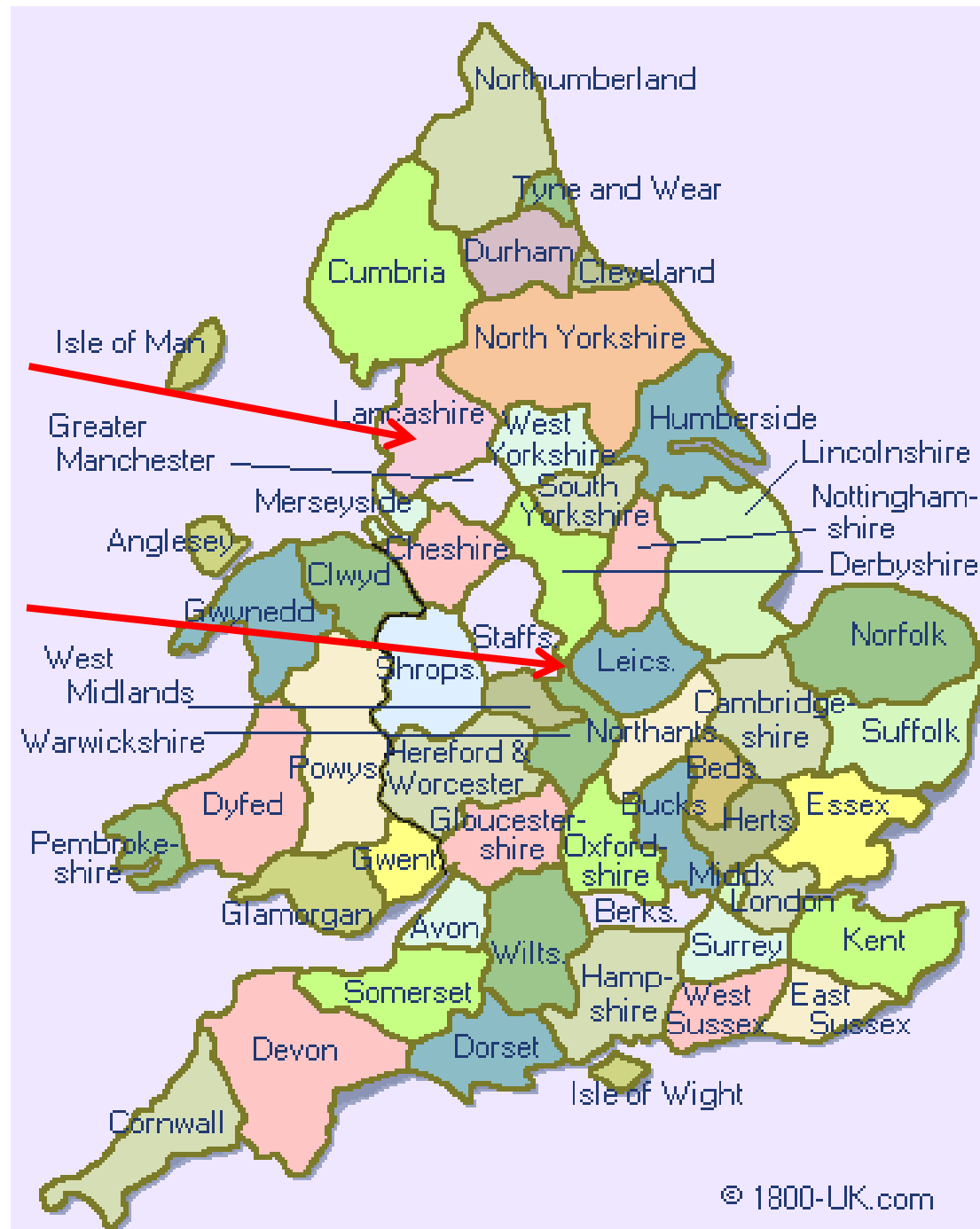
Session Outline

Introductions

Input on current practice and issues followed by discussion

Penny

Nigel



Risk Assessment & Management

- Public Perception of Public Protection
- The two dimensions of risk
- Risk Tools in common use
- Restrictive and Rehabilitative Inputs
- The victims voice

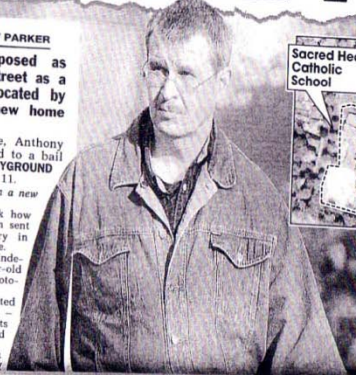
Outrage as paedo left to roam near school is relocated to new hostel...next to TWO schools

UNBELIEVABLE

EXCLUSIVE by ANDREW PARKER

A **PAEDOPHILE** exposed as living on the same street as a school has been relocated by authorities — to a new home next to **TWO** schools.

In an astonishing move, Anthony Parnell has been switched to a bail hostel overlooking a **PLAYGROUND** for kiddies aged three to 11. And he has even been given a new identity — to protect **HIM**. The Sun revealed last week how the pervert postman had been sent to a hostel near a primary in Leamington Spa, Warwickshire. It came after he admitted indecently assaulting a nine-year-old girl and taking an indecent photograph of her. The 45-year-old also admitted owning 501 disgusting images — some of which showed adults having sex with kids and others involving sadism. His new hostel is right next to the Birchfield Community



Sex fiend vanishes

PAEDOPHILE Robert Excell fled his home protected by minders and a cop yesterday after his secret hideaway was revealed. Excell, 67, vanished just weeks after moving in yards from a primary school in the village of East Hamney, Oxfordshire. Neighbours reacted with horror after finding out the kindly-looking pensioner was really a depraved child molester. British-born Excell, below — who used the name Daniel Wright — spent 37 years in an Aussie jail for abusing boys. Neighbour Kathryn Rees, 25, a mum of two, said: "I felt sick."

National

Murder on parole

Burglar who stabbed teacher to death had been released early from prison

Board says attack could not have been predicted
Crack addict served only half of sentence

Losie Cowan
Crime correspondent

serial burglar with a history of violence stabbed a teacher through the heart a month after being released early from jail on parole, it emerged yesterday. The details were revealed after an Old Bailey jury took just 40 minutes yesterday to convict Yousef Bouhaddou of murdering Robert Symons, 45, in his home in hiswick, west London, in October 2004. Bouhaddou, a 28-year-old crack cocaine addict who police believe is responsible for dozens of crimes, served only half of a five-and-a-half-year sentence for a string of burglaries across the capital. The case puts further pressure on the Parole Board, which has been criticised over the case of Jamien Hanson, who stabbed the millionaire financier John Monckton to death in his home in Chelsea in November 2004



National editor: Nick Hopkins
Telephone: 020-7239 9580
Fax: 020-7239 9787
Email: national@guardian.co.uk

National

Killer should not have been freed, says report

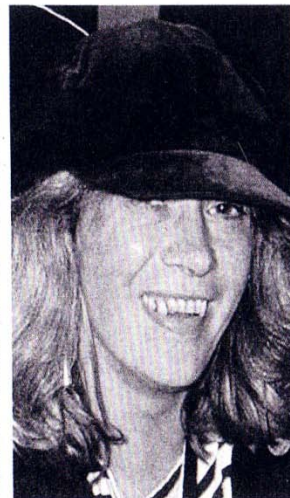
Inquiry finds 'substantial mistakes' in supervision
Human rights undermined
Public protection issues

Ian Travis and Steven Morris

Anthony Rice, the serial sex attacker who killed Naomi Bryant just nine months after walking out of prison, was too dangerous to have been released into the community, according to the official inquiry into the case published yesterday. The chief inspector of probation, Andrew Bridges, found that there had been substantial mistakes and misjudgments by the probation, parole and prison services in his supervision after his release, so he should never have been released in the first place.

The murder of Ms Bryant is the latest amazing, high-profile case in which released high-risk prisoners have committed further serious crimes, rocking confidence in the public protection work of the probation service and parole board.

But Mr Bridges said the failures in the Rice case had been exacerbated by two instances where parole and probation staff had allowed human rights considerations to undermine the importance of public protection. He particularly criticised the response of a borderer receiving



Naomi Bryant, who was murdered by Anthony Rice nine months after he was released from a life-long sentence

Rice's record

- December 16 1982** Rice is sentenced to seven years for rape and indecent assault at the Old Bailey
- June 5 1989** He is given a life sentence for rape and indecent assault at the Old Bailey
- August 1995** Transferred from category A Wakefield prison to category B Grendon
- March 2002** Transferred to Leyhill category D open prison
- August 17 2004** Parole board hearing decides he can be released
- November 12 2004** Released on life licence to hostel near Winchester
- April 24 2005** Assault on woman in Southampton, later admitted by Rice
- May 25 2005** Parole board agrees to lift "containment zone" and vary licence conditions
- August 17 2005** Naomi Bryant killed
- October 28 2005** Convicted of murder and sentenced to life with a minimum term of 25 years

When someone re-offends, be they mental health patients or criminals, all the people involved in letting him/her out should be charged with aiding and abetting. Maybe they would think twice then.

- Margaret, Suffolk

Offender Assessment System - OASys

- to assess how likely an offender is to reoffend;
- to identify and classify offending-related needs;
- to assess risk of serious harm, risks to the individual and other risks;
- to assist with management of risk of serious harm;

Offender Assessment System - OASys

Offending related factors

Accommodation

Employment / Training

Finance

Lifestyle /associates

Thinking & Behaviour

Attitudes

Relationships

Emotional wellbeing

Drug Misuse

Alcohol Misuse

Child Protection - every 10 days



Best Predictive Practice

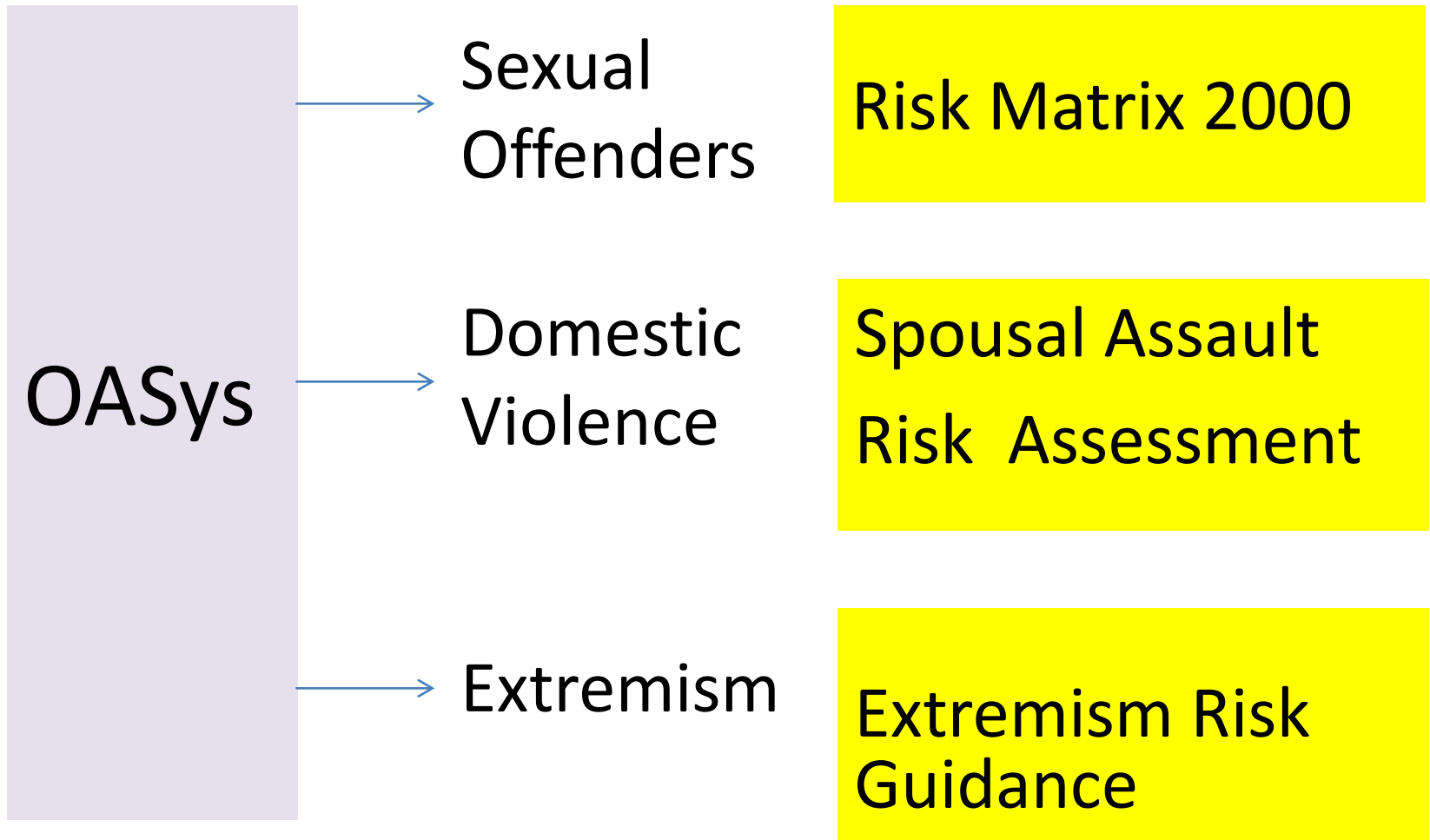
Actuarial
factors

Dynamic
factors

Clinical
judgement

**Risk Assessment =
Structured Professional
Judgement relating to a threat
and the chance of it occurring**

Additional Risk Assessment



Identifying who is at risk and planning to manage that risk

Risk Level	To	Required action
------------	----	-----------------

- **Low**

- **Medium**

- **High**


- **Very High**

- Public
- Known
- Adult
- Children
- Prisoners
- Staff

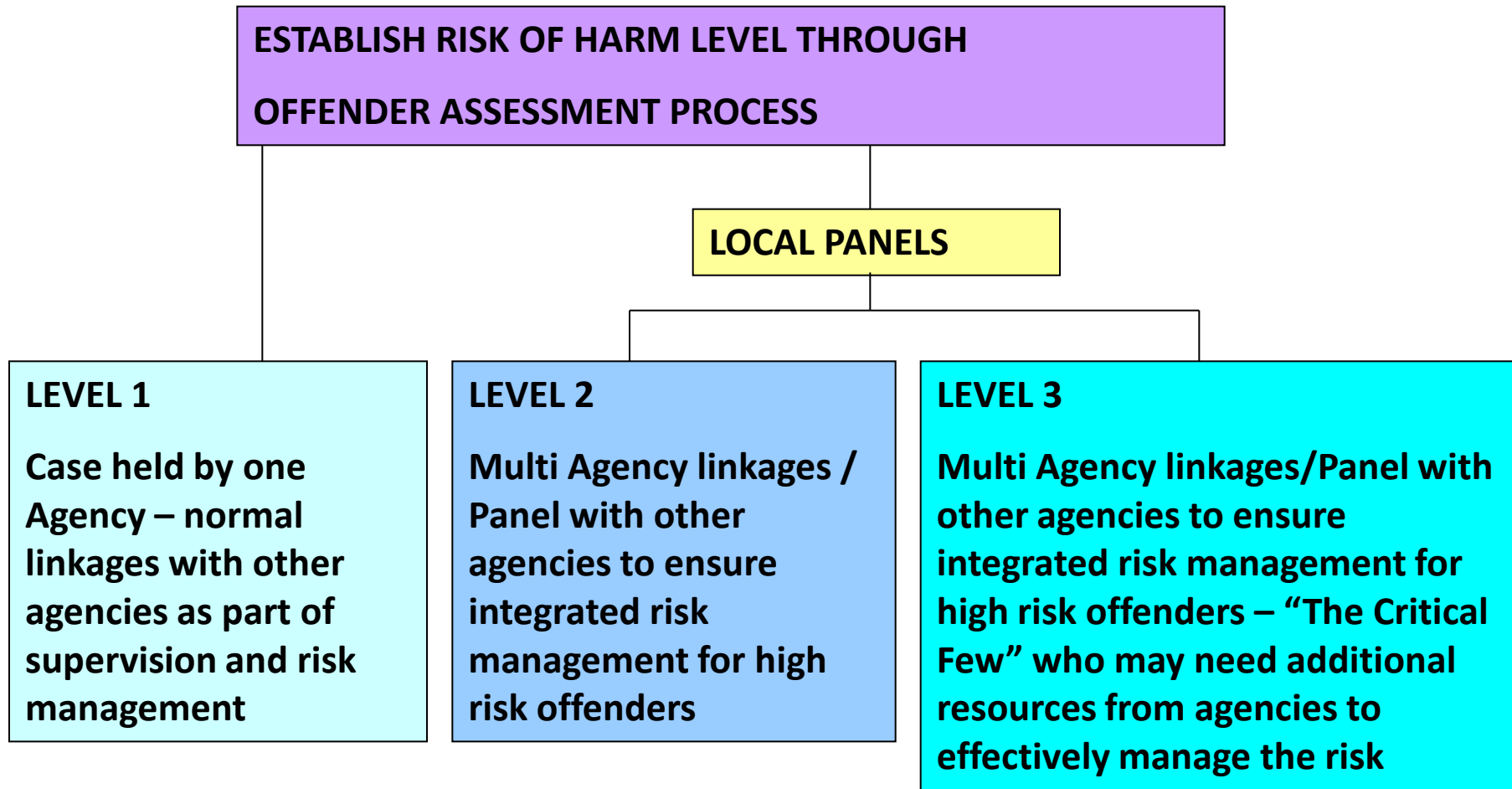
Risk Management Plan

Clarity on responsibility and actions to manage and reduce risk

Risk of Harm Levels

- 
- Low Unlikely no current indicators SH
Potential to cause serious harm but unlikely to occur unless there is a significant change in circumstances
 - Medium
 - High Not imminent but high likelihood of serious harm being caused. Could happen at any time
 - Very High Imminent high likelihood of serious harm being caused
- MAPPA**

MAPPA Arrangements

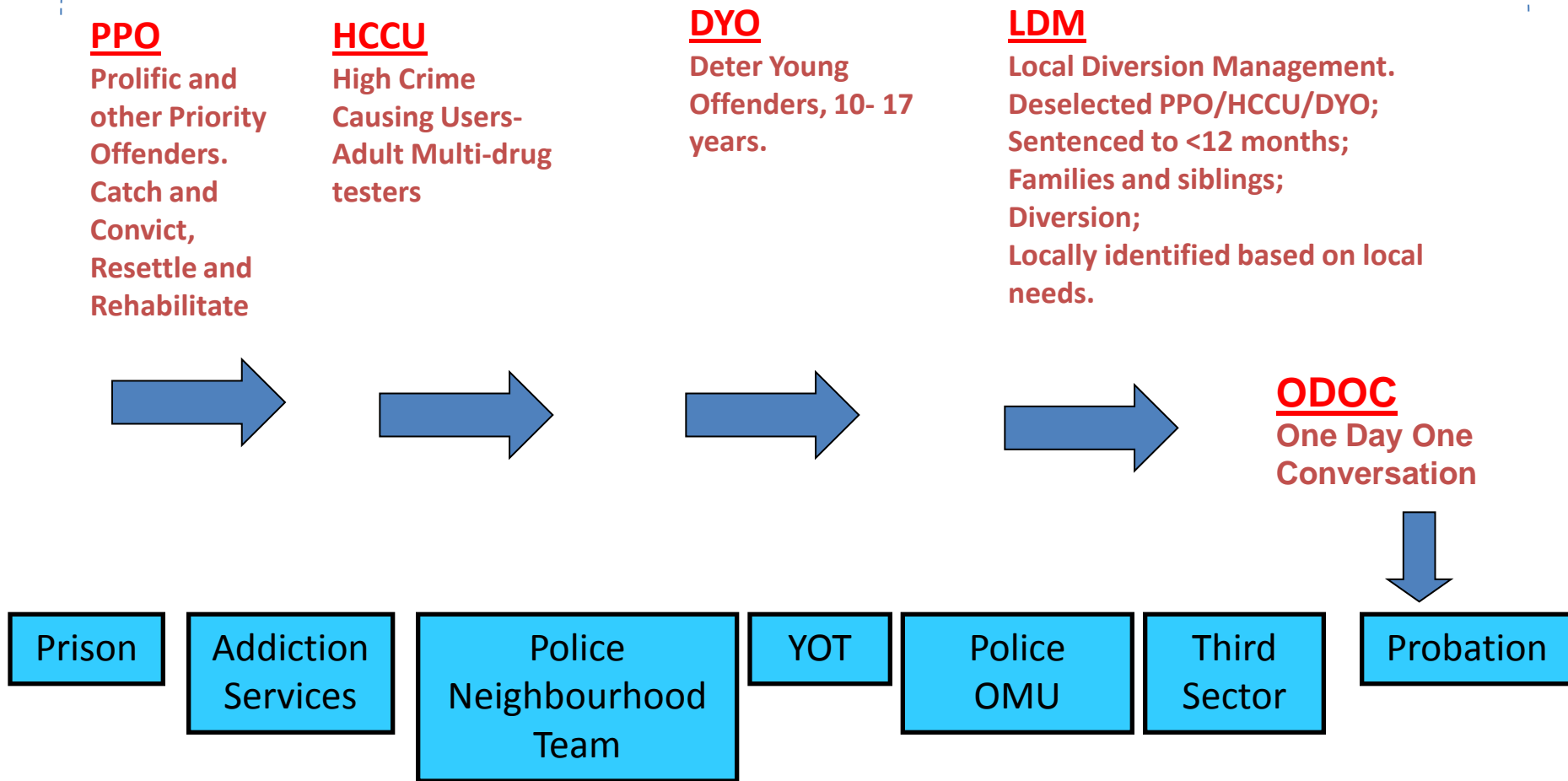


Concentration of agency resources on those posing greatest risk

Essential Partnership Working

Whilst MAPPA is focussed on Sexual and Violent Offenders there are other multi agency forums where partners come together to help manage an individual.

Integrated Offender Management - example



Sentence planning

- A clear plan for each offender with achievable goals
- From start of sentence to end of supervision
- Objectives to reduce risk of harm and risk of reoffending.
- Suitability for programmes
- **For indeterminate prisoners essential for release consideration**

Prisoner release

- Offence Parallel behaviour
- Prisoners on indeterminate sentences released on Parole Board decision
- Majority of prisoners in the England and Wales are released at half their sentence.
- Where risk of harm is still assessed as high release is often through a specialised Probation Hostel (Approved Premises)
- Often not welcomed by local communities



Risk Management & Enforcement

Option of 31 licence conditions

Plus additional 8 for extremist offenders

Conditions broadly cover Contact/ prohibited activity/ residence/ programmes /curfews/non association/supervision / exclusion zones

Recall to prison by probation officers can occur in 2 hours

Public Protection v Human Rights issues?

Victim Voice

- Where offender sentenced to 12 months prison for violent or sexual offending
- Victim informed of key stages of sentence
- Victim can ask for non contact / exclusion
- Victim information informs risk assessment planning.
- Some developments around Restorative Justice.

Probation Chiefs Association



The PCA believes:

Protection of the public is paramount and is most effective when managed through partnership arrangements.

Probation staff are well positioned to assess and manage the risks posed by violent and sexual offenders in conjunction with partner agencies.

Research and evaluation of methodology is key to understanding models of best practice.

Learning & development is essential to staff knowledge, skills and confidence in working with offenders who pose risk of serious harm.

Trusts sharing experience and expertise supports professional development.

- John Brown received 5 years for a wounding offence against his partner. Drink /drugs related violence.
- Has attended alcohol awareness course and education classes. 2 adjudications in prison 9 months ago for disobeying orders.
- Due for release in 6 months. Partner with 3 year old child wants him to return to her.
- What planning / restrictions could or would you put in place in your work location?

