



CONTEXTUAL FACTORS OF AGGRESSIVE BEHAVIORS TOWARDS PRISON STAFF



UNIVERSITATEA
DIN BUCUREȘTI
VIRTUTE ET SAPIENTIA



Ioana Morar
National Administration of Penitenciarities

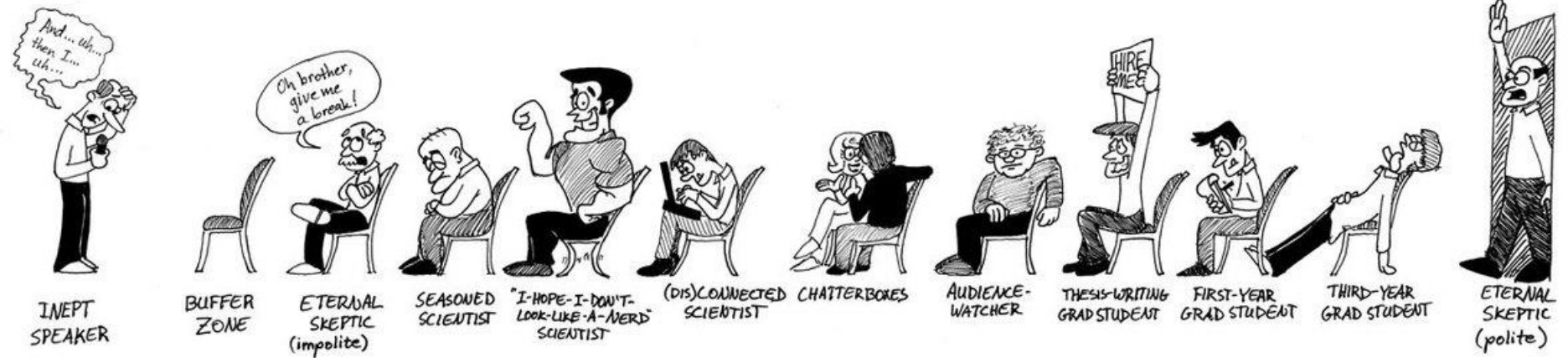


FACULTATEA DE SOCIOLOGIE ȘI
ASISTENȚĂ SOCIALĂ
Universitatea Babeș-Bolyai

Assoc. prof. Mihai-Bogdan Iovu, PhD.
School of Sociology and Social Work
Social Work Department



THE COMPLETE GUIDE TO CONFERENCE ATTENDEES

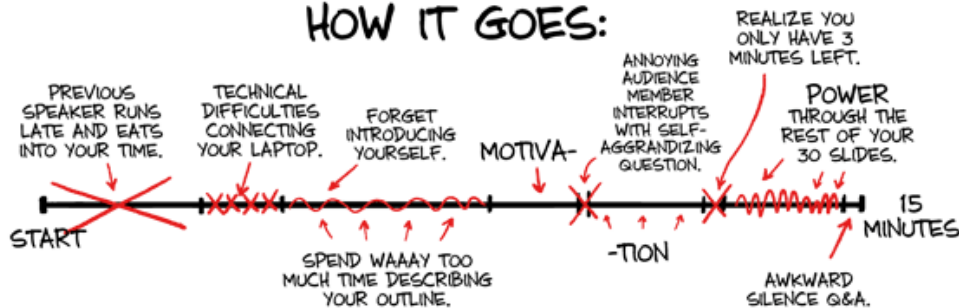


YOUR CONFERENCE PRESENTATION

HOW YOU PLANNED IT:



HOW IT GOES:



Aims of the study

- exploring the particular aggressive behavior towards prison staff recorded in 2015.
- describing the factors associated with engagement into aggressive behavior by inmates



Context

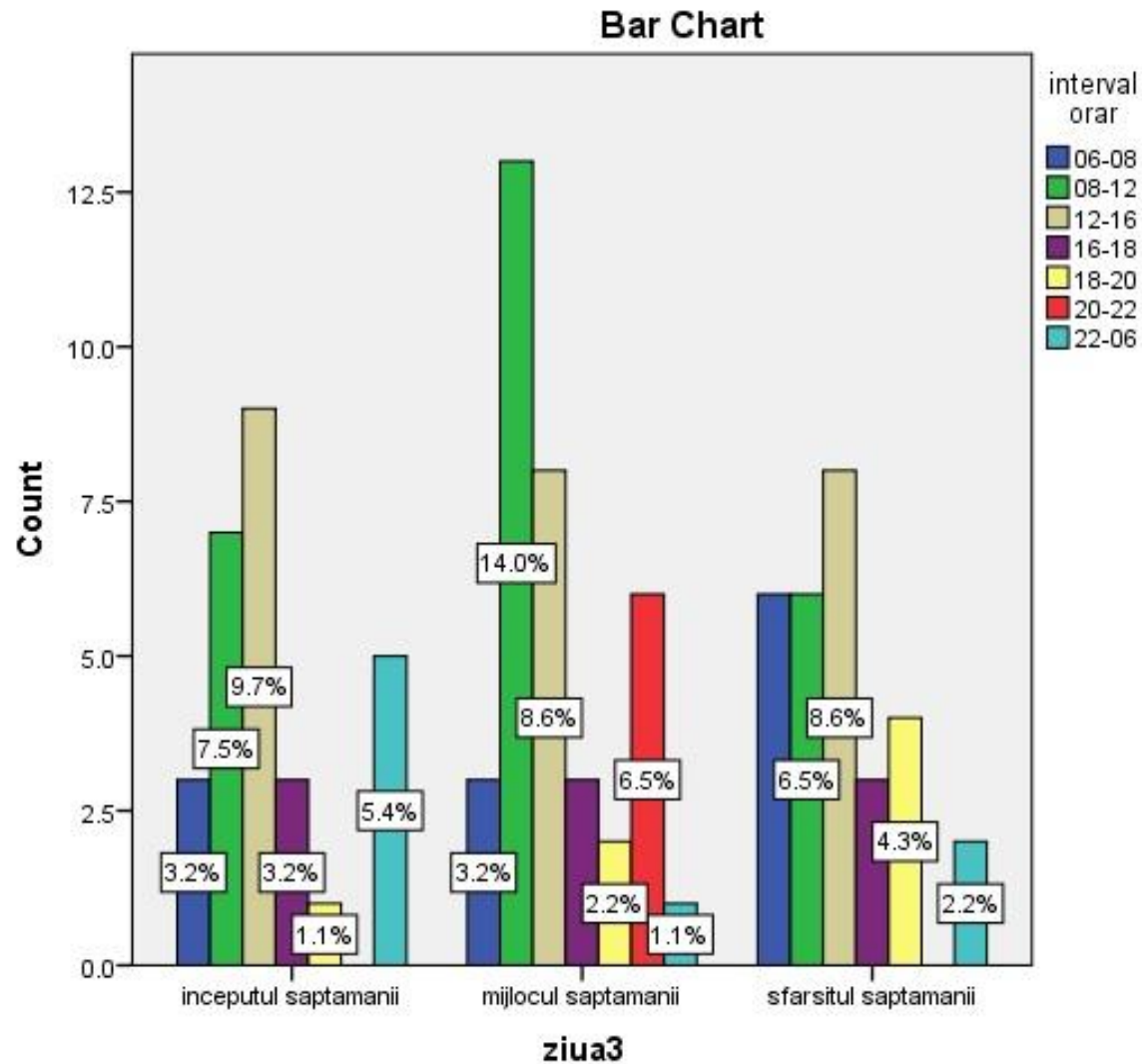
- Prison guards must ensure the safety of all inmates, their colleagues, and any other prison staff, sometimes acting as "bumper excitement" (Boudoukha, et al., 2011)
- Aggressive behaviors displayed by inmates in correctional facilities can create problems both for other inmates and for staff.
 - identifying the individual and contextual factors that create a vulnerability is an important issue of concern at structural level (Sorensen & Cunningham, 2007)
 - assaults on staff increase the level of vulnerability among correctional staff (Sorensen et al., 2011), including for PTSD and burnout (Boudoukha et al., 2013; Harizanova & Tarnovska, 2013).
- Various explanatory models: biological, behavioural, social learning, excitation transfer...however...
 - **general aggression model** (Anderson, 2001; DeWall, Anderson, & Bushman, 2012; Anderson, DeWall & Bushman, 2011).



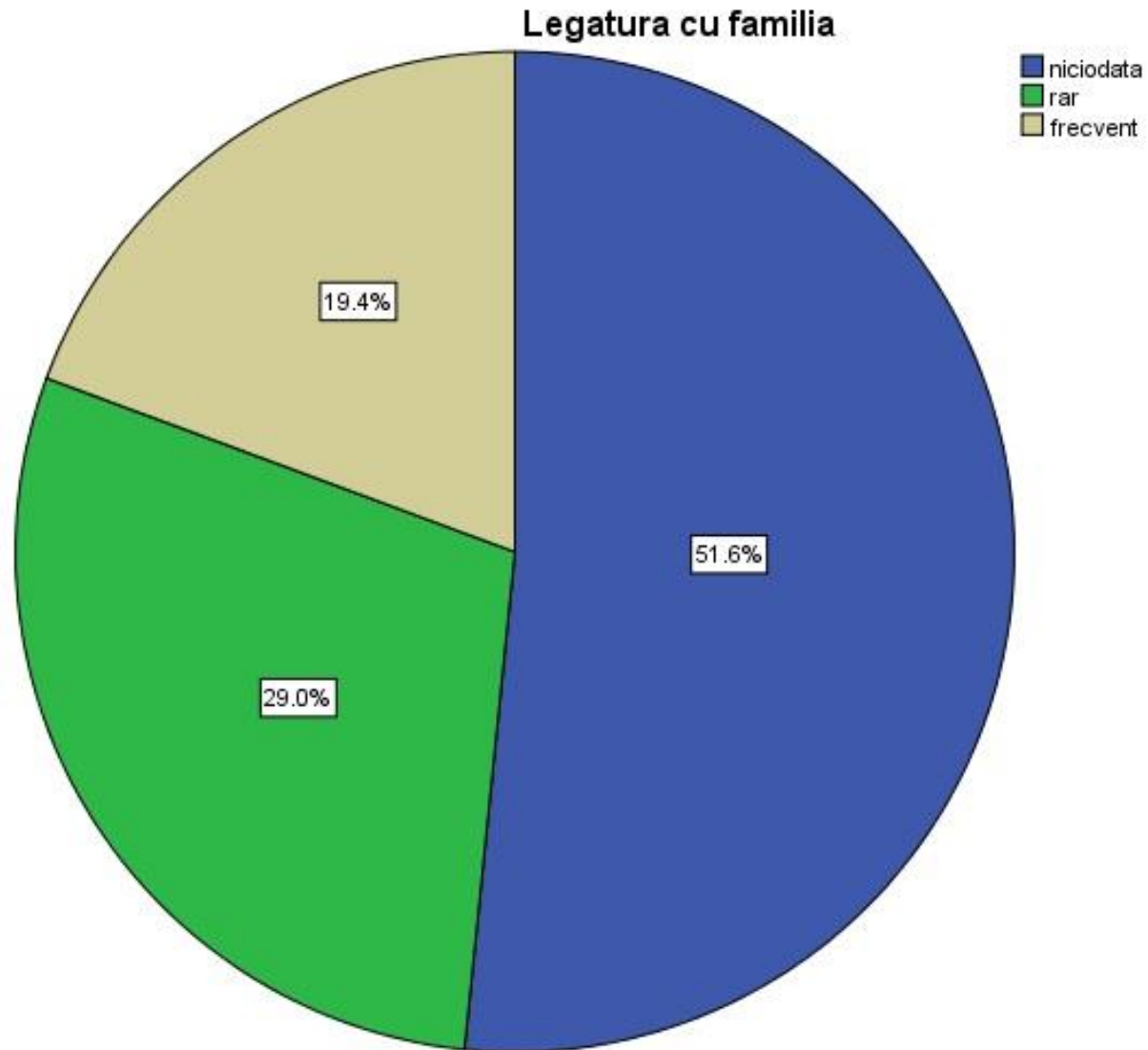
Events (N = 93)

Variable	N (%)
<i>Region</i>	
South-West	3 (3.2)
South-East	32 (34.4)
North-West	3 (3.2)
North-East	21 (22.6)
Centre	2 (2.2)
West	5 (5.4)
South	13 (14.0)
Bucharest	14 (15.1)
<i>Detention regime</i>	
Maximum security	28 (30.1)
Closed	31 (33.3)
Semi-open regime	11 (11.8)
Open	2 (2.2)
Placed in custody	7 (7.5)
Unclassified	14 (15.1)
<i>Age</i>	
Minor	7 (7.5)
Youth	14 (15.1)
Adult	72 (77.4)
<i>Education</i>	
University	3 (3.2)
Highschool	15 (16.1)
Middle school	38 (40.9)
Elementary school	30 (32.3)
Illiterate	7 (7.5)

Results (I)

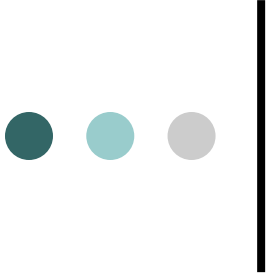


Results (II)



inceptul saptamanii	
mijlocul saptamanii	
sfarsitul saptamanii	
Total	

Total	
	28
	100.0%
	36
	100.0%
	29
	100.0%
	93
	100.0%

- 
- 2/3 aggressive detainees attended certain activities and programs while 1:4 did not attend any activity offered in the standardized offer.



Results (III)

○ Location

- detention room (43%)
- walking yard (8.6%)
- hallway (6%)

○ Motives

- dissatisfaction with provisions of obedience (37.6%)
- nervousness (16.1%)



Further discussion

- prison staff face more risks compared to other community services
- living conditions in penitentiaries heightens the aggressive disposition of inmates
- targeted interventions but structural oriented
 - violence is rarely just a function of the individual
 - person-centered interventions ignore the multiple structural, institutional, and environmental factors that contribute to prison violence

*Thank you for
your time!*



CARTOONSTOCK
.com

Search ID: cwln3759

"I don't understand your question.
Could you restate it as an answer?"