



# Reoffending after an EM measure

## La récidive des placés sous surveillance électronique

---

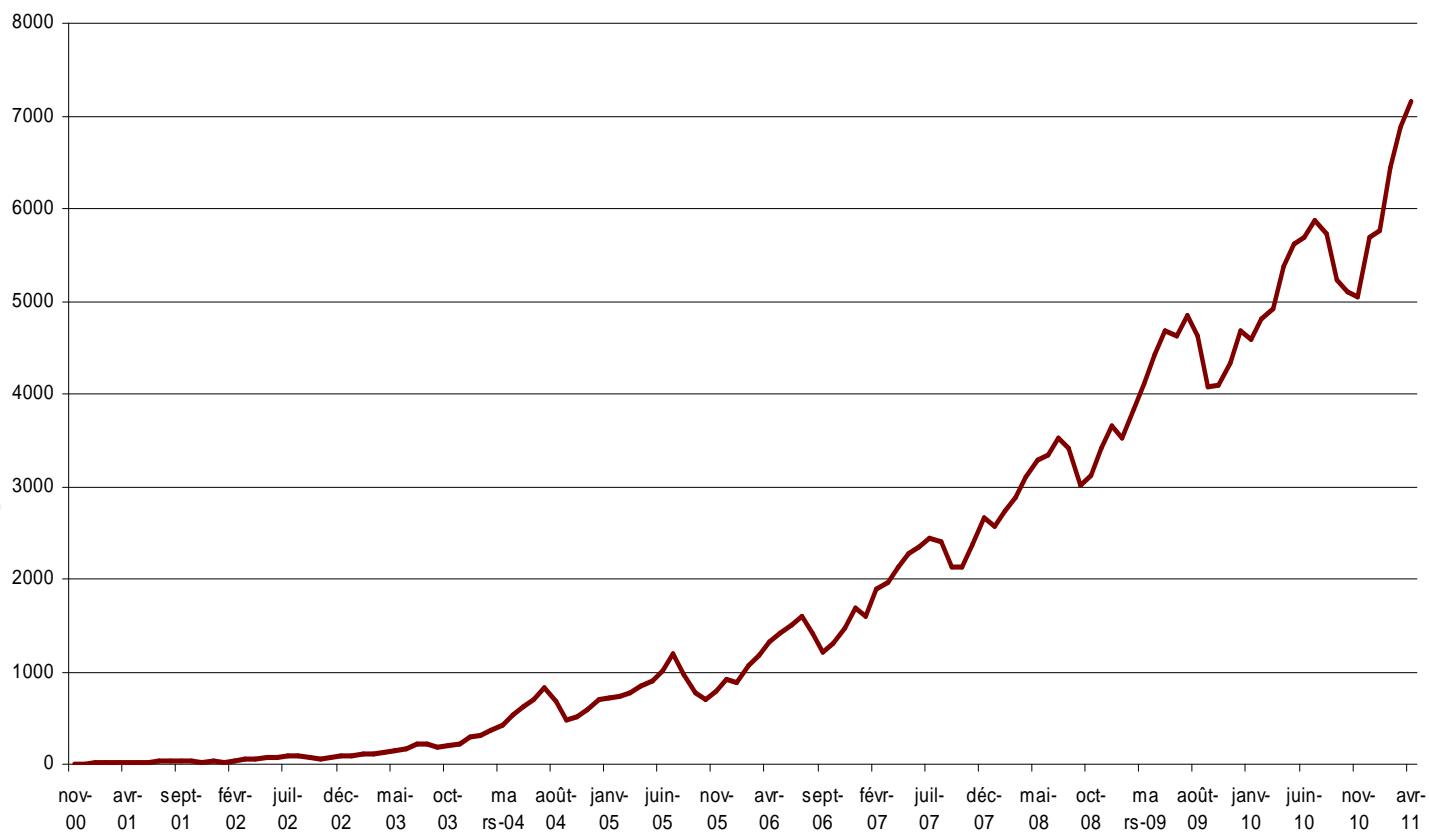
CEP Evora

**Annie Kensey, demographer, DAP, CNRS, CESDIP**  
**René Lévy, CNRS, CESDIP**  
**A. Benaouda, DAP**

**6 mai 2011**

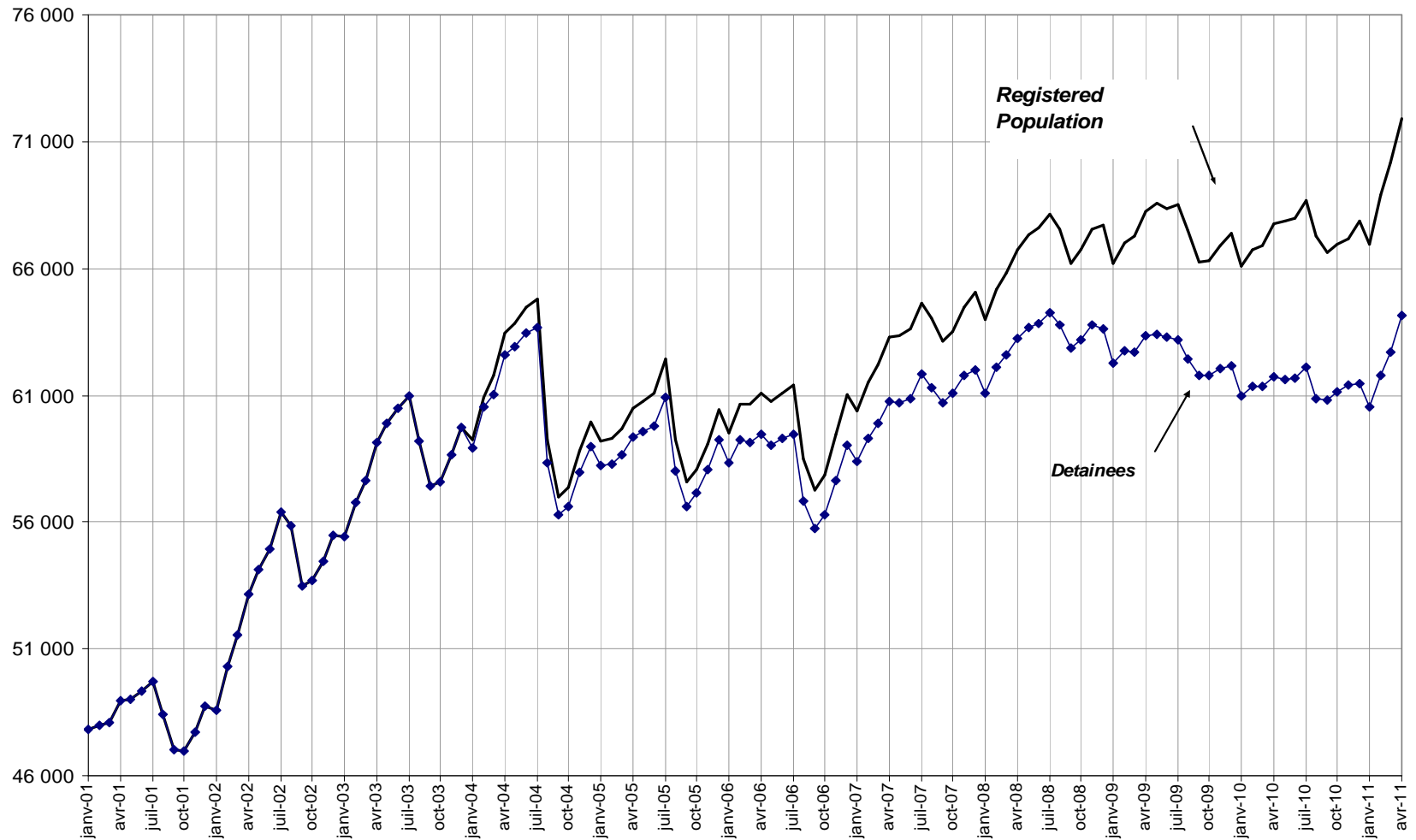
# Increase in the number of EM sentences over the past 10 years in France

**Number of convicted people under EM**



(Measured at the 1st of each month)

# French Prison Population 2001-2011





## Recidivism : lack of evaluations

---

- 3 études retenues par Mayo/Renzema
  - Finn and al. (2002)
  - Bonta and al. (2000)
  - Sugg and al. (2001)
- Marklund and al. (2009)
- Kensey, Lévy, Benaouda (2010)



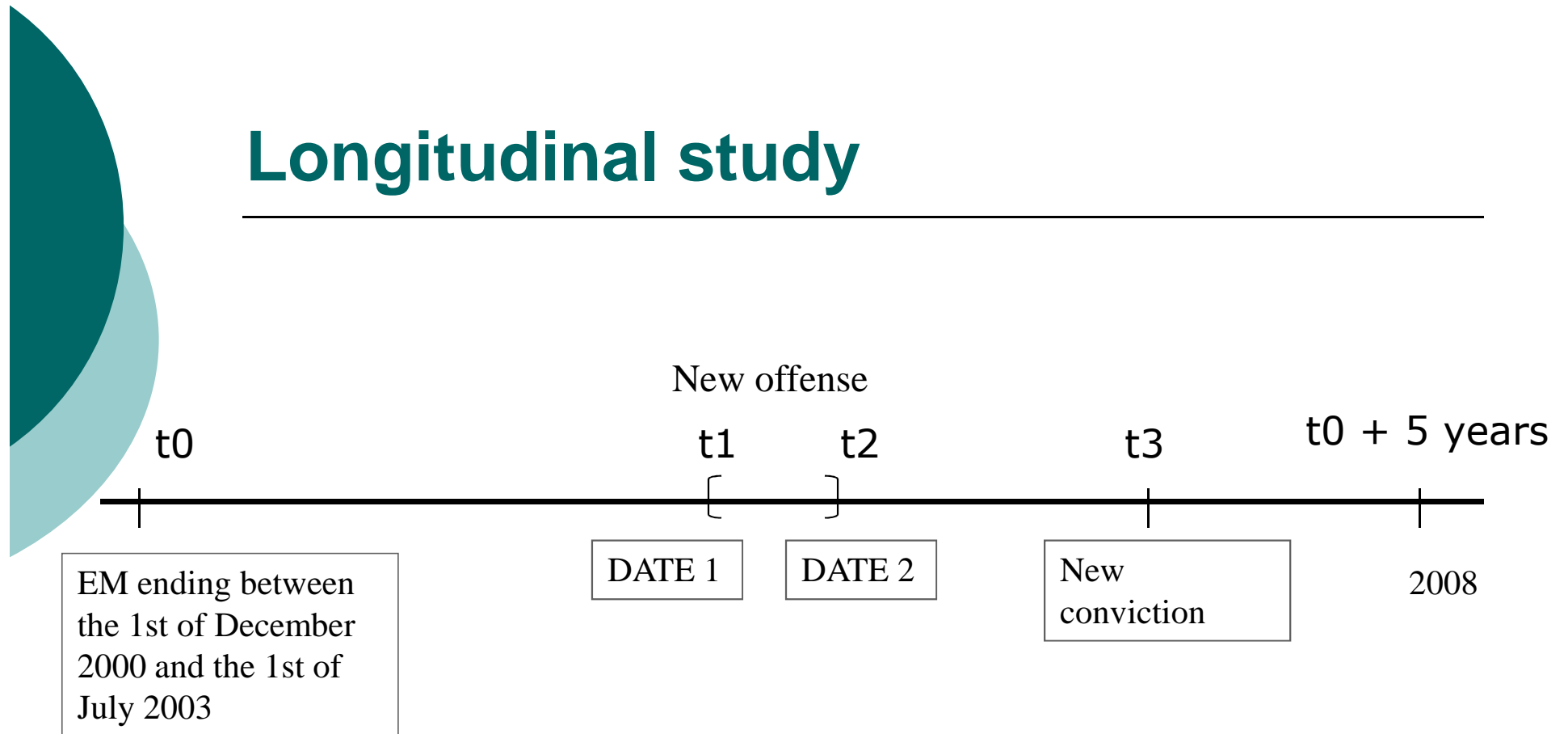
## 3 parameters to measure recidivism

---

- Which population are we looking at (prisoners; convicted to a community service order; random; exhaustive population)?
- What are we measuring (rearrest; Reincarceration)?
- Length of the follow up period to evaluate the rate of recidivism (1 year?, 5 years?, 20 years ?...)

# Longitudinal study

---





# Global Recidivism rates 5 years after Electronic Monitoring

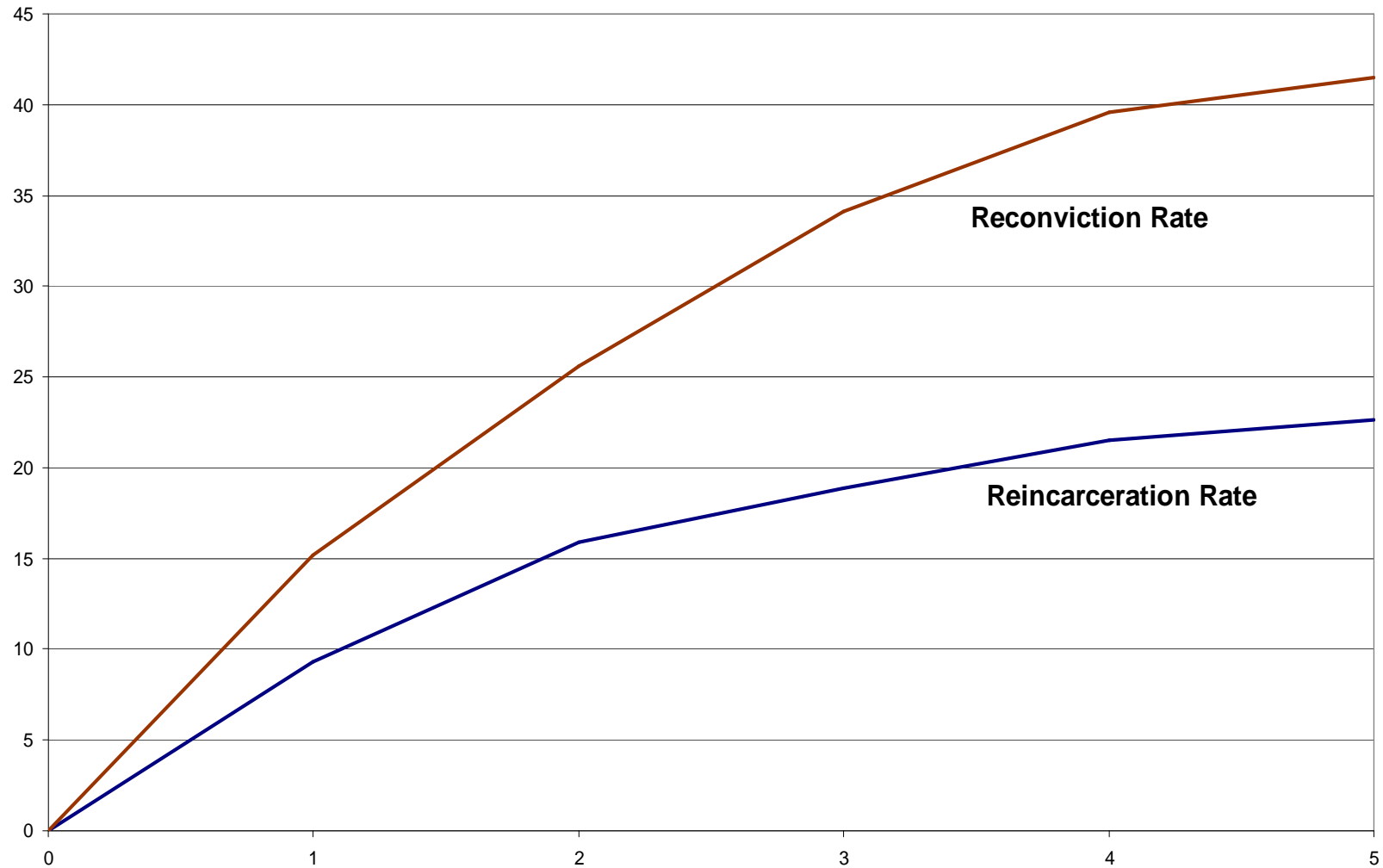
---

- Reconviction rate  
**42 %**
- Reincarceration rate  
**23 %**
- Reincarceration rate for a very serious offence  
**0.2 %**

580 EM which ended between 2000-2003

# Cumulated Reoffending rates

---







## Recidivism rates according to the type of offence (5 years after EM)

offences	Reincarceration rate	Reconviction rate
Theft	31%	55%
Violence against the person	28%	50%
Drug trafficking and use of drugs	21%	44%
Drinking and driving	24%	38%
Fraud	11%	25%
Sexual assault	6%	12%
<b>Global rates</b>	<b>23%</b>	<b>42%</b>

580 EM which ended between 2000-2003



## Recidivism rates according to previous convictions (5 years after EM)

---

Number of previous convictions	Reincarceration rate	Reconviction rate
1	12%	27%
2	15%	36%
3	25%	58%
4	43%	55%
5 and up	45%	60%
<b>Global rates</b>	<b>23%</b>	<b>42%</b>

580 EM which ended between 2000-2003



## Recidivism rates according to EM duration (5 years after EM)

---

EM Duration	Prison ferme	Toutes peines
Less than 3 months	24	45
From 3 to less than 6 months	20	31
From 6 months to less than 1 year	15	44
All	23	42



## Recidivism rates according to the number of incidents (5 years after EM)

---

INCIDENTS	<b>Prison ferme</b>	<b>Toutes peines</b>
no incident	19	37
one and up incidents	29	49
Global rates	<b>23</b>	<b>42</b>



## Rates at the end of EM (5 years after)

---

	<b>Reincarceration rate</b>	<b>Reconviction rate</b>
End of EM	25	45
Conditionnal release	10	25
<b>Global rates</b>	<b>23%</b>	<b>42%</b>



## Recidivism rates according to age at the end of EM (5 years after EM)

---

Age at the end of EM	Reincarceration rate	Reconviction rate
Less than 30 years	32%	53%
30 - 49	16%	35%
50 years and up	5%	14%
<b>Global rates</b>	<b>23%</b>	<b>42%</b>

580 EM which ended between 2000-2003

# Recidivism after an Alternative Sanctions (follow up period : 5 years)

Initial Sanction	Reincarceration rate	Reconviction rate
Prison sentence	<b>61%</b>	<b>72%</b>
Suspended sentence with community service	<b>41%</b>	<b>59%</b>
Community service	<b>34%</b>	<b>58%</b>
Conditional Suspended sentence	<b>32%</b>	<b>52%</b>
Electronic Monitoring	<b>23%</b>	<b>42%</b>
Full suspended sentence	<b>19%</b>	<b>39%</b>

Convicted in 1996, North department, EM 580 between 2000 and 2003

# Comparative Rates according to initial sentence and previous convictions

Initial Sanction	Reincarceration rate		Reconviction rate	
	Observed Rates	Comparative Rates	Observed Rates	Comparative Rates
All	31%		49%	
Prison sentence	61%	<b>61%</b>	72%	<b>72%</b>
Suspended sentence with community service	41%	<b>49%</b>	59%	<b>65%</b>
Community service	34%	<b>31%</b>	58%	<b>48%</b>
Conditionnal suspended sentence	32%	<b>53%</b>	52%	<b>68%</b>
<b>Electronic Monitoring</b>	<b>23%</b>	<b>35%</b>	<b>42%</b>	<b>54%</b>
Full suspended sentence	19%	<b>41%</b>	39%	<b>63%</b>





# Thanks for your attention

---

i **Reoffending after an EM measure**  
**La récidive des placés sous surveillance**  
**électronique**

**Annie Kensey, demographer, DAP, CNRS, CESDIP**

**René Lévy, CNRS, CESDIP**

**A. Benaouda, DAP**