



Ministerie van Justitie
Dienst Justitiële Inrichtingen

DJI

**Presentation
Implementation of
Motivational Treatment**



Facts and figures

- ca. 10.000 FTE
- 29 institutions – average 300/350 cels
- MPC – 1400 cels
- ca 11.800 detainees (50% prison – 50% remand houses)
- ca. 13,000 cel
- 100.000 inhabitants - 71 adults are detained
- Recidivism: around 60%



Modernisation of the Prison System as a Starting Point

Higher aim

We are standing for a secure and human detention and we cooperate with our partners and the detainees on the reintegration.

So we contribute to a safe and secure society.

Daring aim 2020

In cooperation with partners reduction recidivism of 25%.

We are achieving this by an efficient and personal oriented approach of detainees

Core Values

Securityawareness
Integrity
Cooperation
Human oriented
Taking and granting responsibility

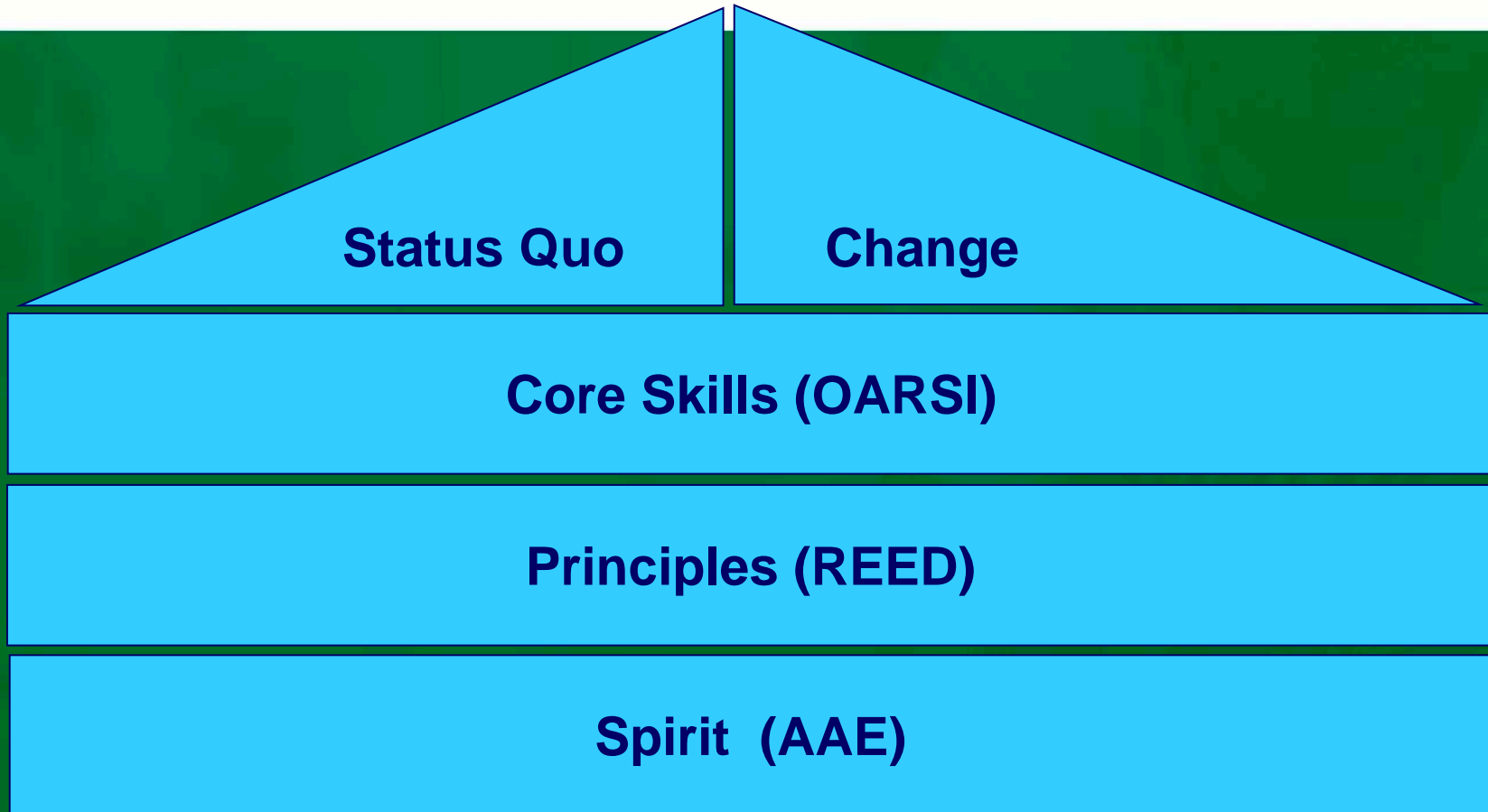


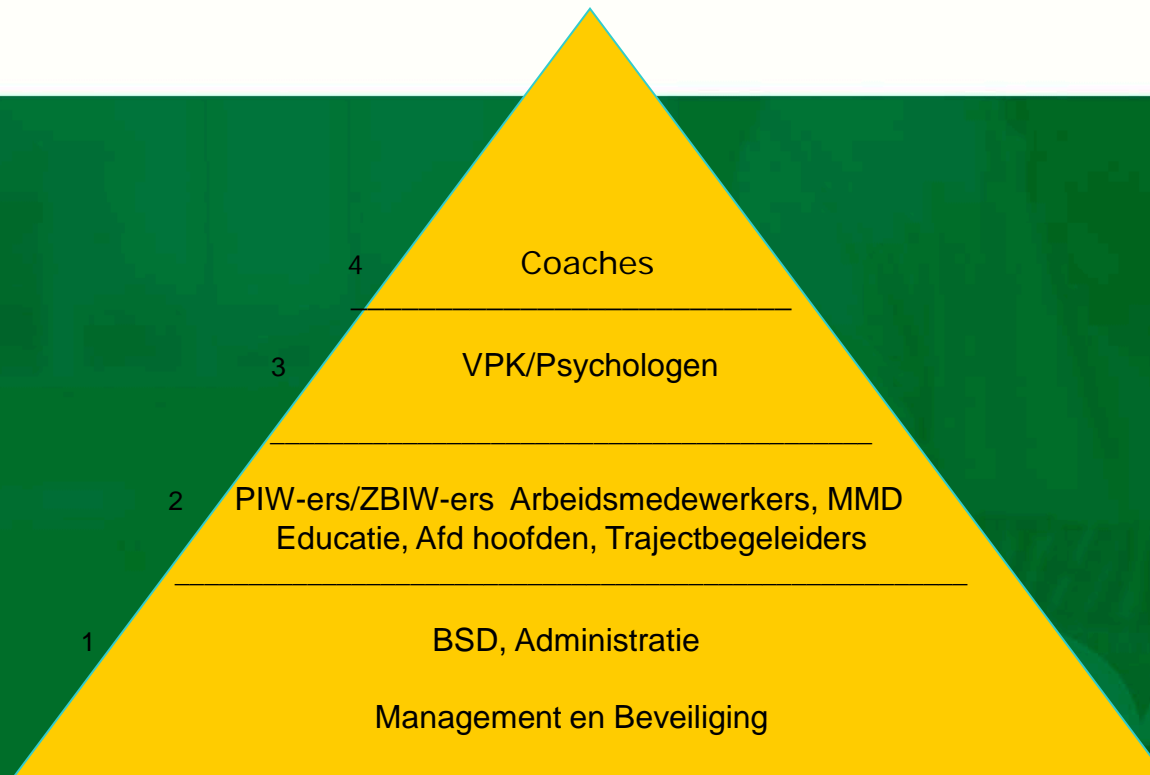
Core qualities

Motivated treatment
Reliable partner
Offering a secure work and living climate
Leadership
Involvement
Flexibility



The house of Motivational Interviewing







MOBE COACHES

- Roll model: someone who is able to trigger the learning button
- Someone who can roll with resistance by nature
- Every team: one member is educated and trained more than the rest
- Later we started doubling
- Organise Intervision and supervision
- Alliance with leader and team
- Roll and task with TOPs
- Sometimes triades in function ring interviews



TOP Team Development Plan

- Values
- Behaviour
- Motivational Treatment
- Commitment on difficult behaviour
- Mentoring
- Reporting



Motivational Treatment

-Motivational Treatment is one of the aspects of professionalism

- Mobe-coaches
- Mentor
- Report
- TOP
- Methodology-coaches
- Leadership



Thoughts about learning

- It's about culture change
- Prison systems should be more ambivalent between taking care and safety
- Takes a long breath and consistent messages
- Takes strong motivational leadership
- Helping professionals on the floor
- If more than half will learn, the rest will follow
- Skills should be practised in daily processes and they can be monitored
- Ask the inmates 😊



Empathie
Samenwerking



Weerstand

Empathie