



Government of the Netherlands

Collection of data- diagnosis and functioning of treatment

Dr. Hans Hulsbos,
psychiatrist at Vught prison,
the Netherlands

Dublin 6 December 2017



Psychiatric penitentiary centre (PPC) in the Netherlands

- 4 prisons
- 600 patients
- Care and treatment comparable to general psychiatry

- Diagnosis
- Treatment
- Prevention
- Transfer to general psychiatry



Admissions

Tabel 5 No admissions

	2013	2014	2015	2016	2017*
PPC Totaal	885	1513	1431	1500	1242

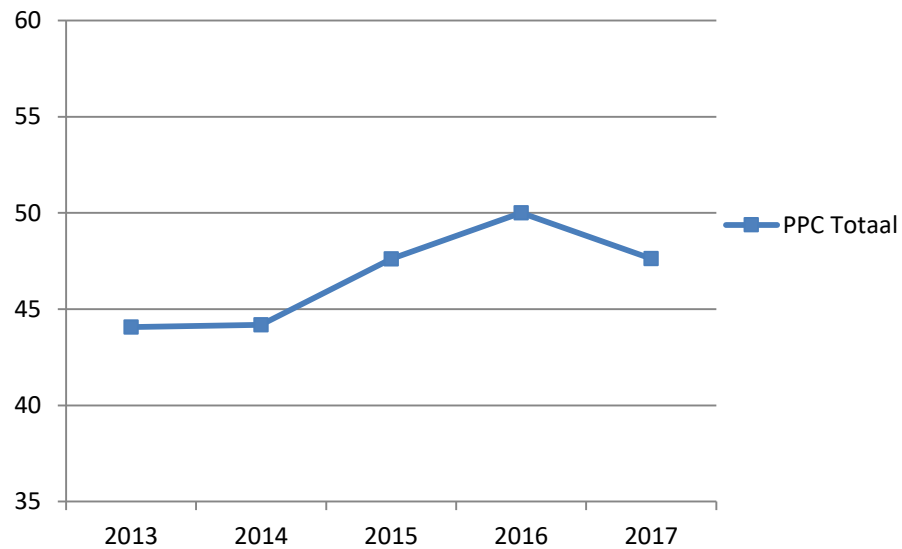


Reasons for admission

	2013	2014	2015	2016
Treatment and diagnosis	100%	100%	100%	100%
Agression	19,4%	18,5%	22,9%	23,2%
Suicidal behavior and automutilation	15,2%	16,7%	16,3%	15,4%
Conduct disorder	7,0%	6,8%	5,3%	6,5%
Disturbance of the peace	47,3%	45,8%	41,3%	39,2%



Symptom severity at admission

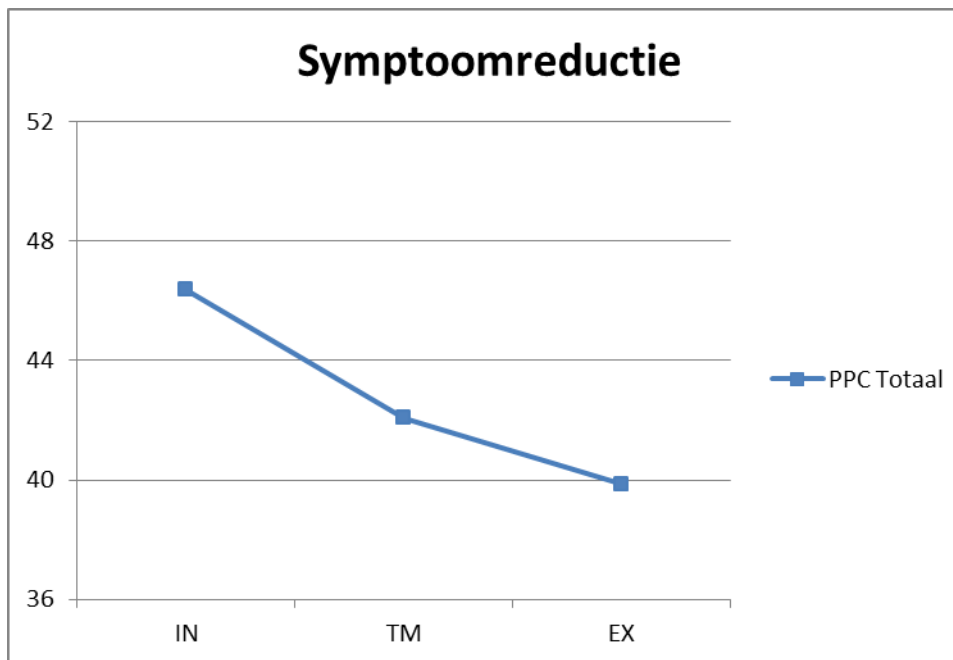


Tabel 1 BPRS at admission

	2013	2014	2015	2016	2017*
PPC Totaal	44,06	44,18	47,61	50,01	47,62



Symptomreductie (BPRS)



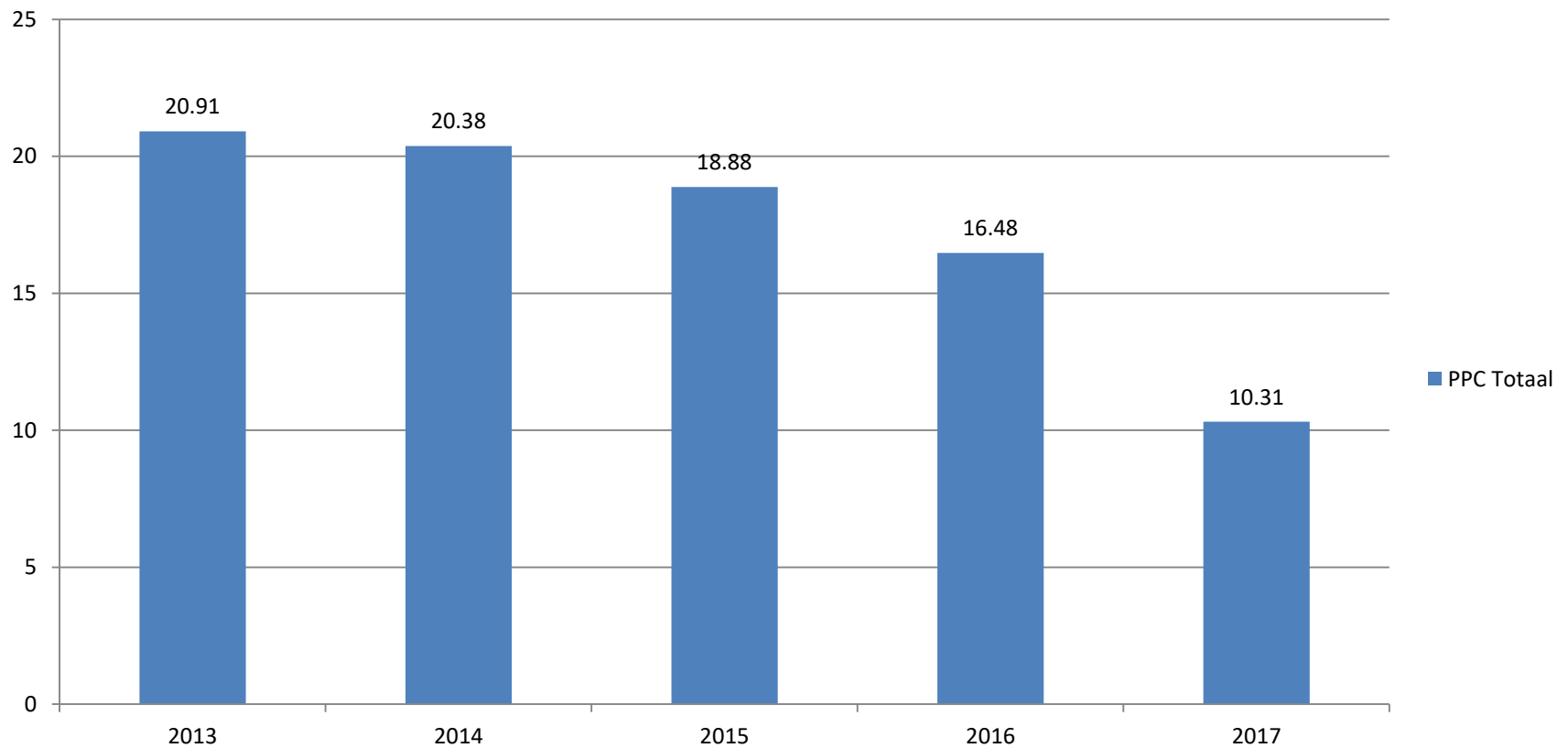
Tabel 2 Change during stay

	IN	TM	EX
PPC Totaal	46,37	42,07	39,87



Length of stay

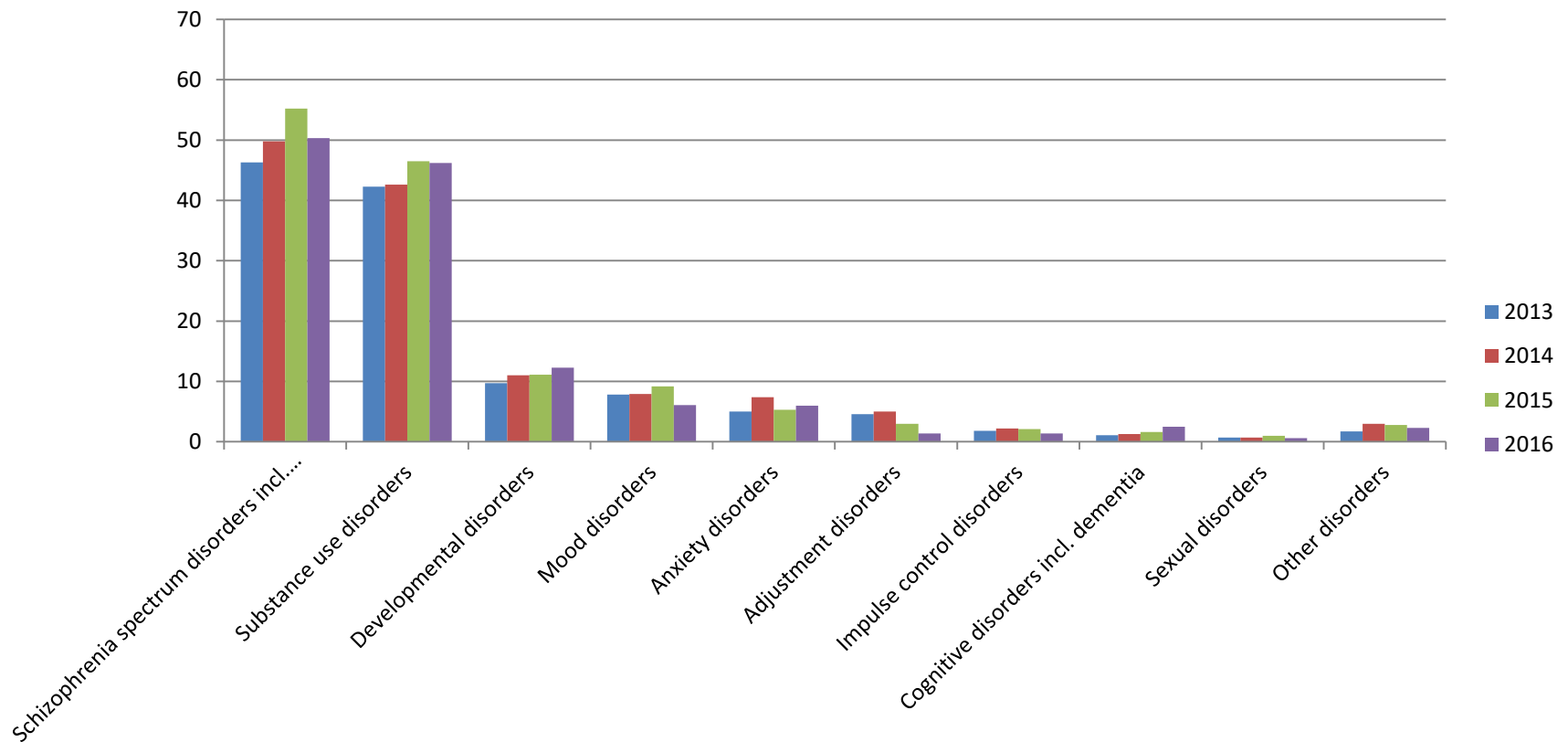
Gemiddelde verblijfsduur in weken





Diagnosis

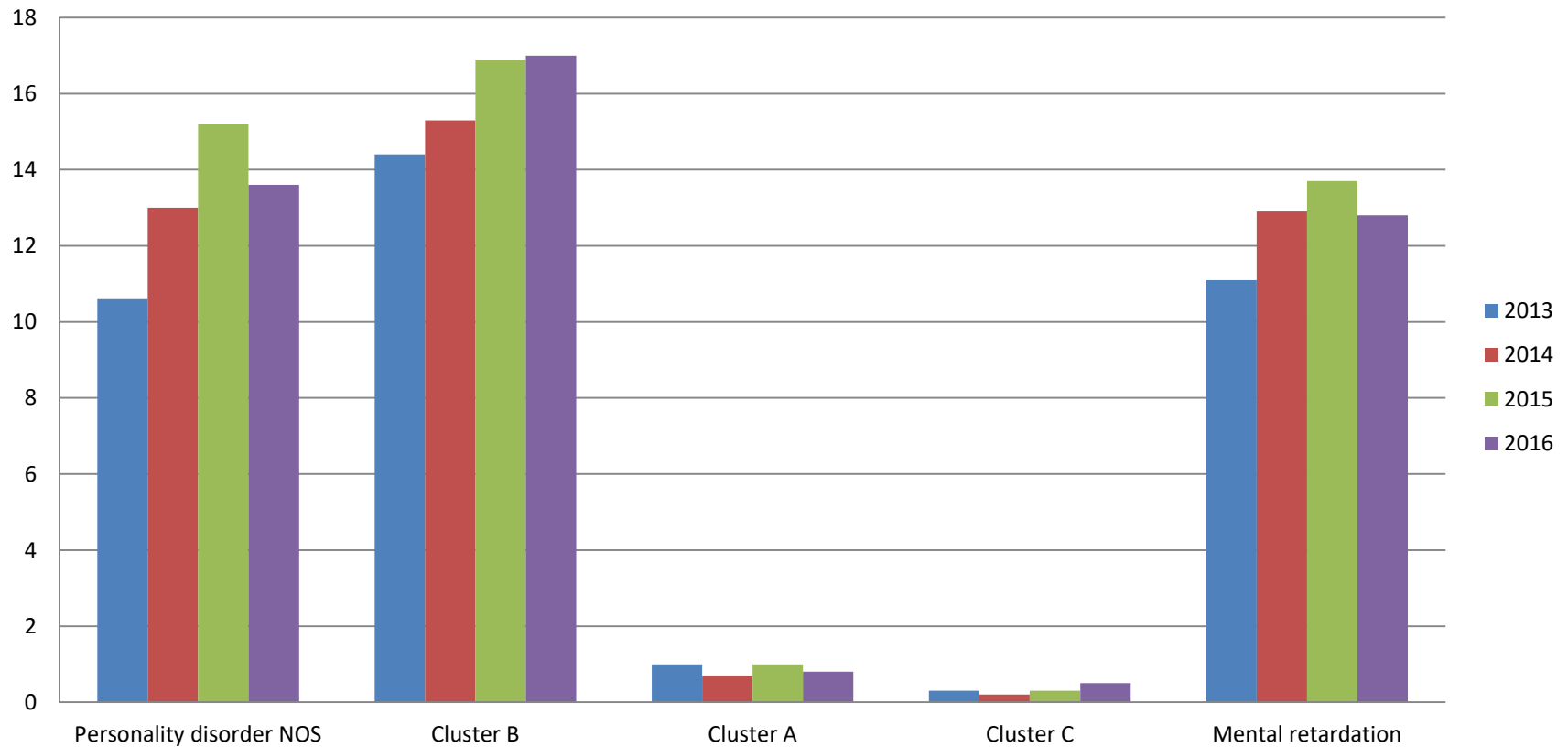
Verdeling DSM As I





Personality disorders

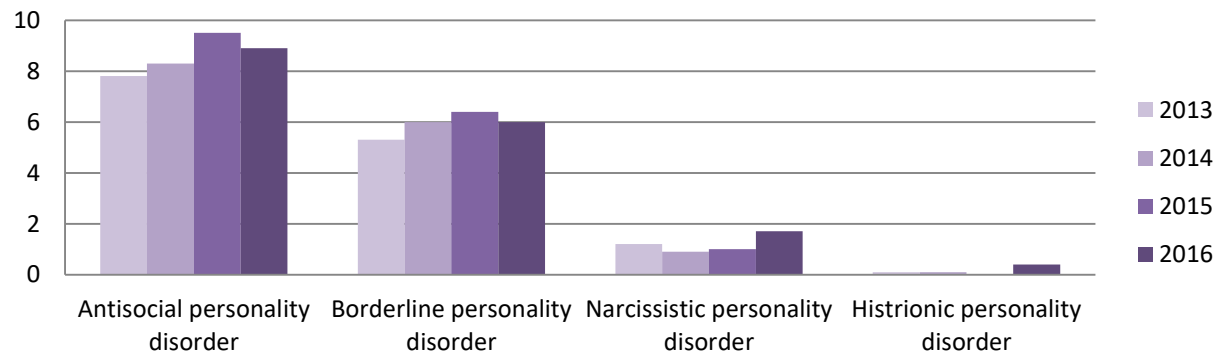
Verdeling DSM As II





Cluster B personality disorders

Verdeling Cluster B diagnoses





Discharge

Tabel 5 No discharged

	2013	2014	2015	2016	2017*
PPC Total	487	1370	1439	1473	1798*



Treatment after end of detention

- Treatment in general psychiatry necessary: 80%
- Treatment in general psychiatry after detention : 65-70%
- Involuntary admission

	RM	IBS	Artikelplaatsing (art 37/15.5/43.3)
2013	0,9%	0%	29,7%
2014	4,7%	0,3%	24,4%
2015	10,9%	4,7%	22,4%
2016	9,9%	4,3%	21,5%
2017*	13,1%	2,2%	12,1%



Discussion

- (Forensic) psychiatry and safety in society
- Professional secrecy
- Potential conflicts treatment vs. safety
- Criminal justice vs psychiatry
- “Preventive psychiatry”
-