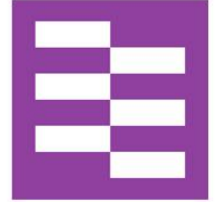




National Offender
Management Service

National
Probation
Service



Problem Solving Court

Manchester & Salford Magistrates
Court

Kathryn Moynihan

The England & Wales Criminal Justice System



Why Women?



Women have....

- Different offending patterns
- Different needs
- Minority group
- Equality isn't about treating people the same!

“Equality does not mean treating everyone the same. The new gender equality duty means that men and women should be treated with equivalent respect, according to need. Equality must embrace not just fairness but also inclusivity. This will result in some different services and policies for men and women”

Baroness Corston, 2007

The Problem Solving Court Principles

- Community Engagement
- Collaboration between legal officials
- Individualised Justice
- Offenders held accountable for non compliance
- Available Training
- Outcomes analysed for ongoing cost benefit analysis

Problem Solving Court Model

Adjourn for a Probation Report

Interviewed and Risk Assessed

Pre Sentence Report Author shares information with relevant Agencies

At the sentence planning meeting, appointments with Agencies are made

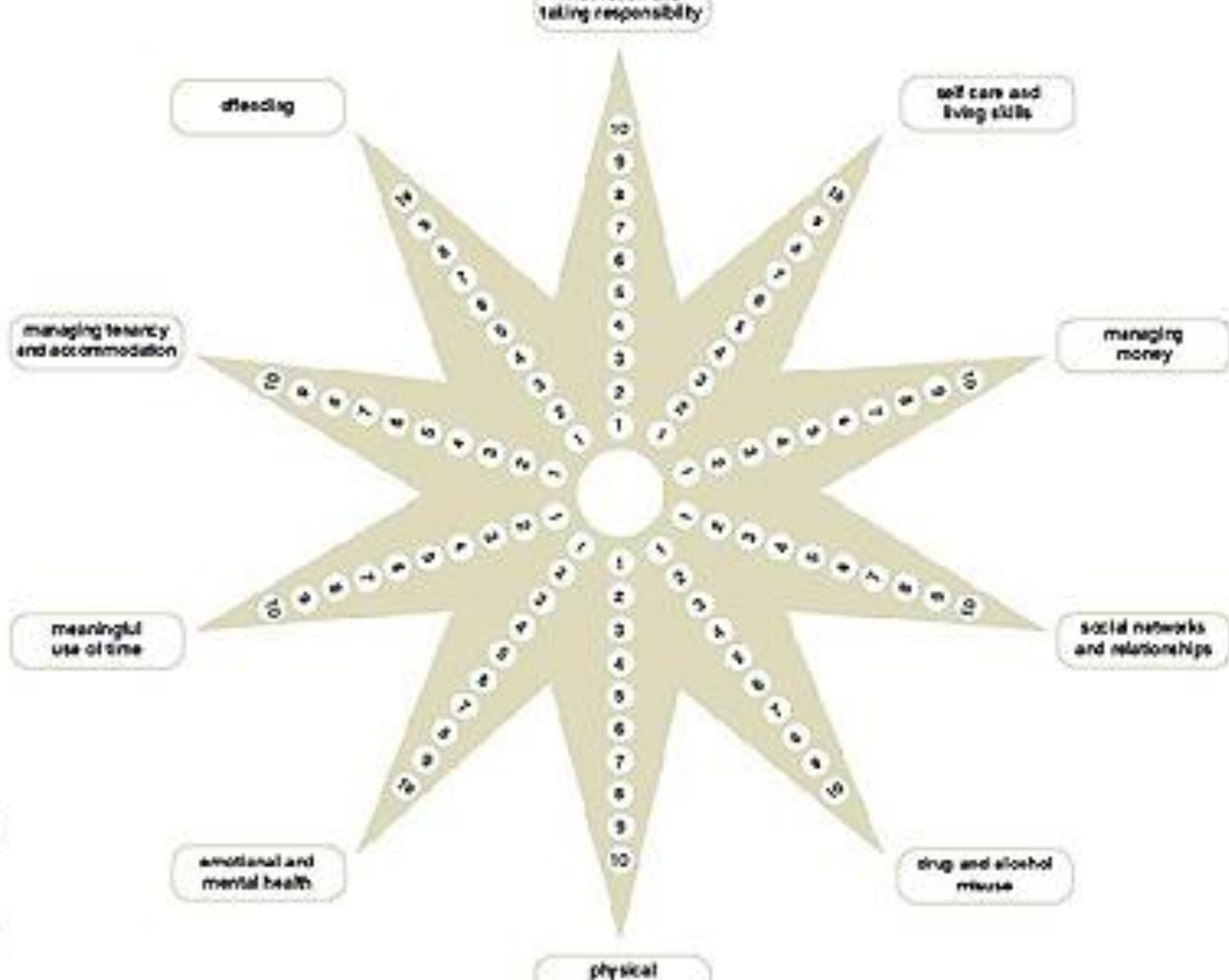
Female attends Court and sentenced to a Community Order with reviews

Offender Manager responsible for Enforcement and Compliance



Michelle's Problem Solving Journey





Impact of PSC on female offenders

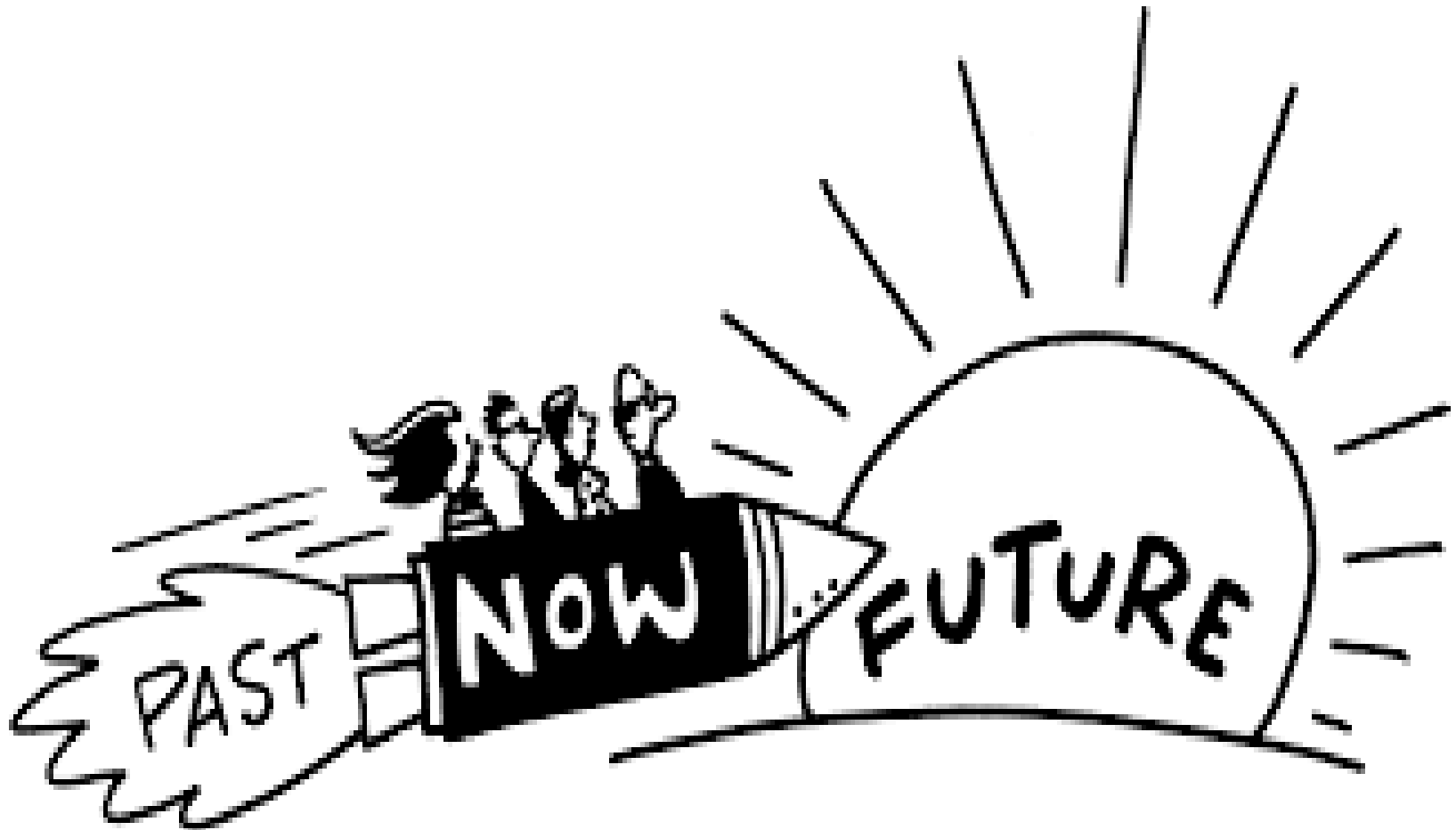


Impact of PSC on Criminal Justice System

- Reduced Re-Offending
- Reduced Short Term Custody
- Cost Savings



The future of The Problem Solving Court...



Thank you for listening!

kathryn.moynihan@probation.gsi.gov.uk