



Electronic Monitoring in Sweden The past, present and the future

CEP Conference Stockholm 2012

Jan Bungerfeldt

Manager Electronic Monitoring

The Swedish Prison and Probation Service



History:

- 1942: The Swedish Probation Service was founded
- 1994: Front door scheme
- 2001: Back door scheme
- 2005: Electronic tagging on the first open prison



Why electronic monitoring?

The main purposes behind electronic monitoring when it was introduced in 1994 was:

- To find a trustworthy alternative to imprisonment
- To prevent institutional damage to the target group
- Cut the cost for implementing prison sentences





Front door scheme - an alternative for short term prison sentences

- 1994: The EM pilot starts. Only 5 smaller areas of Sweden, prison sentences of up to 2 months
- 1997: The whole of Sweden, prison sentences of up to 3 months
- 2005: Prison sentences of up to 6 months



Back door scheme - a possibility to serve the last part of a longer sentence outside the prison with electronic monitoring

- 2001: Maximum length 4 months outside prison
- 2005: Maximum length 6 months outside prison
- 2007: Maximum length is half the sentence outside prison

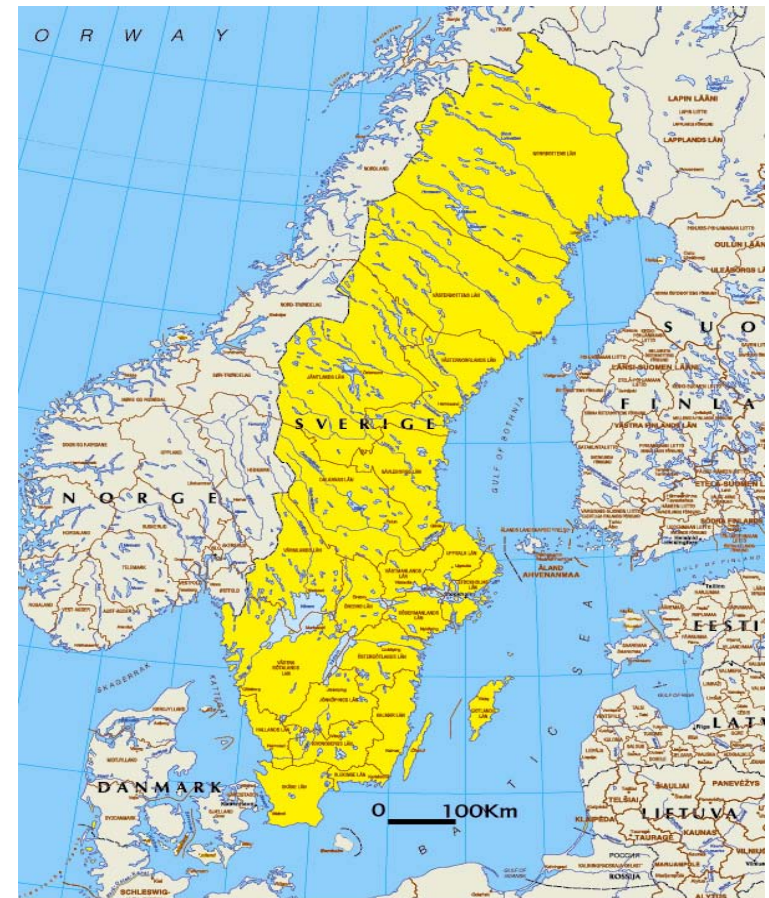


Electronic monitoring in open prisons

- 2005: EM was introduced in the first open prison facility
- 2007: EM was installed in three additional open prison facilities

A large country and difficult to monitor!

- More than 2000 km from north to south
- About 9 million inhabitants
- 34 Probation agencies



The Probation Service responsibilities are:

- Informing about EM
- Motivate to participate in the EM-program
- Investigation and decisions of applications
- Starting up the electronic monitoring
- To react on breaches
- Any adjustments on technical equipment
- To perform home visits and treatment programs
- Present reports on breaches to the local Probation Board

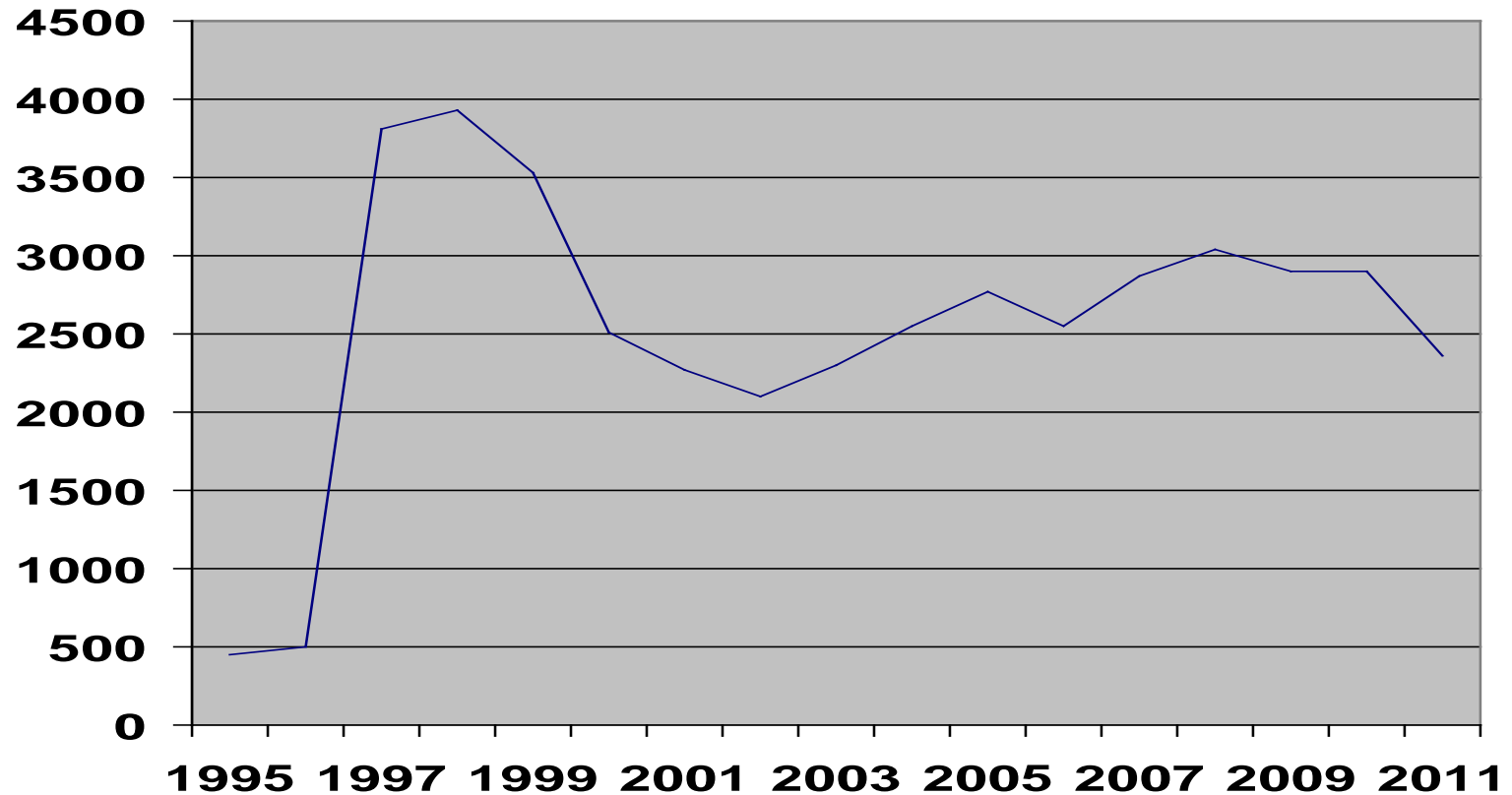


Conditions clients have to fulfill:

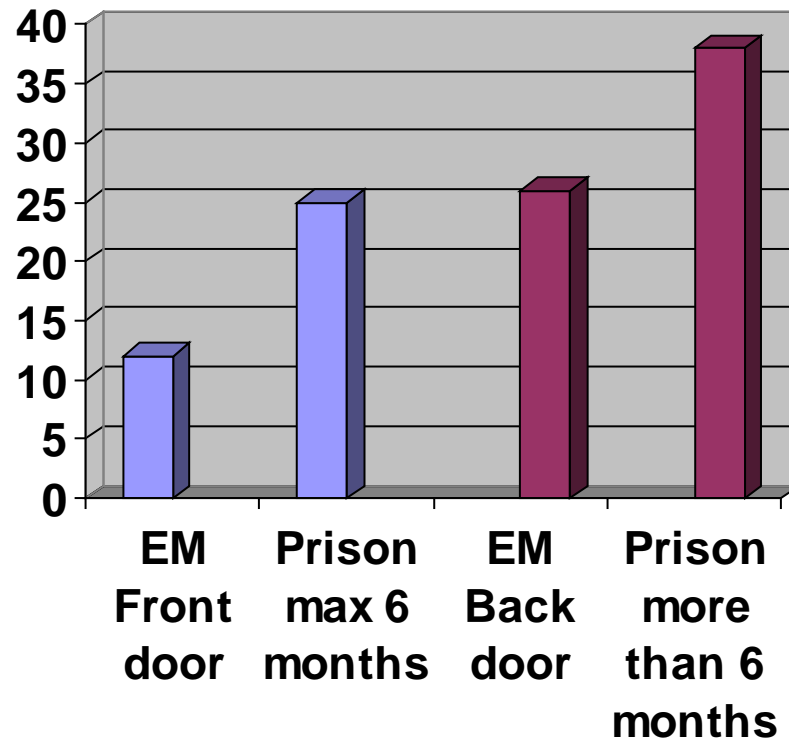
- Only leaving home at scheduled times
- A acceptable accommodation
- An occupation of at least 20 hours per week
- Prohibited to use alcohol and drugs
- Participate in treatment program if needed.
- Receive home visits from the Probation Service
- Pay a fee of 50 SEK (\$7) per day to the Crime Victim Compensation and Support Authority (only front door)



Participants in the EM program 1995-2011 (Front door)



Reoffending rate after 3 years



EM saves money!

- Daily cost for 1 prisoner in a low security prison is 1645 SEK (\$235)
- Daily cost for 1 client participating in the EM-program is 400 SEK (\$55)



The future in Sweden?

- GPS
- Other techniques
- Asylum seekers
- Changed and increased use of EM
- Juvenile offenders





Thank you for your attention!

Jan Bungerfeldt

*Manager Electronic Monitoring
The Swedish Prison and Probation Service
E-mail: jan.bungerfeldt@kriminalvarden.se*
